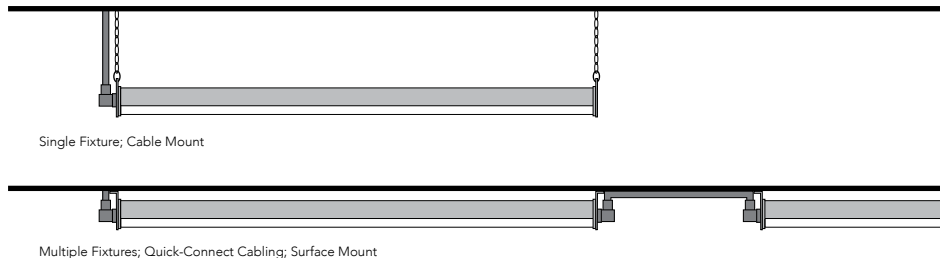




IP69K
CERTIFIED



RGBW HARSH ENVIRONMENT LED LUMINAIRE

Product Features

DMX 512 Compliant

4 channel RGBW with DMX lighting control protocol for ultimate control.

Compact High Output Design

Engineered around the latest in LED technology to achieve a low-profile 2" design. The end result is a strong, compact luminaire that is installation friendly and packs a punch of LED power per channel.

Superior Waterproof and Chemical Resistance

A seamless copolyester out shell provides IP69K ingress protection (1500 PSI) along with extreme chemical resistance.

Quick Connect Cabling

Secure push and lock connectors and cabling for easy installation and the ability to daisy chain multiple fixtures.

Performance Summary

Power

100W Per Channel (Up to 200W Instant Total Power)

Mounting

Surface or Cable Mount

Dimensions

Length Varies, Width 2" x Height 2"

Voltage

120-277 VAC Input

Secondary Optics

Available with a standard 120° beam angle or narrow focused 20° beam angle.

Ambient Rating

-20°C to 40°C

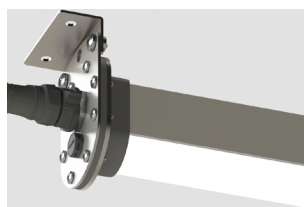
Ordering Information

Product	Length	Optics	Standalone or Daisychain	Mounting
DMX				
	8 8-Foot	120 (standard) No Secondary Optics - 120° Beam Angle	TERM (standard) Connectors on Input Only, No Daisy Chain. For Standalone Install on Last Fixture in Chain. Includes Internal DMX Terminating Resistor	CM Cable Mount
	6 6-Foot	020 Added Spot Optics - 20° Beam Angle	THRU (Daisy Chain) Through Wired with Connectors on Input & Output for Ability to Daisy Chain Fixtures. No DMX Terminating Resistor	SM Surface Mount
	4 4-Foot			

Connection Cabling & Mounting



Cable Mount



Surface Mount

Cable	Type	Length	Wire
DMX-JMP-1	Jumper	1ft	18 AWG SJTW
DMX-JMP-8	Jumper	8ft	18 AWG SJTW
DMX-LDR-10	Leader Cable	10ft	18 AWG SJTW
DMX-LDR-20	Leader Cable	20ft	18 AWG SJTW