



INDUSTRIAL LIGHTING

T 800.285.6780 E sales@ggled.net

www.ggled.net

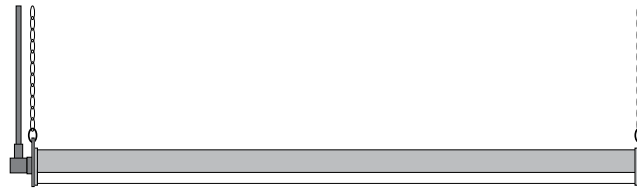
Date

Project



IP69K
CERTIFIED

IK10
IMPACT
CERTIFIED



Single Fixture; Cable Mount

FOOD PROCESSING IP69K LUMINAIRE

Product Features

Compact High Output Design

Engineering around the latest in LED technology to achieve a low-profile 2" design. The end result is a strong, compact luminaire that is installation friendly and packs a punch at up to 20,000 lumens.

Superior Waterproof and Chemical Resistance

A seamless copolyester outer shell provides IP69K ingress protection (1500 PSI) along with extreme chemical resistance. Designed for heavy hosedown applications and/or daily sanitation.

Coextruded Copolyester/Aluminum Housing

Our patented process combines copolyester and aluminum together, with no seals or gaskets. The result is a single piece enclosure with excellent heatsinking characteristics for long lifetime.

Quick-Connect Cabling

Secure push-and-lock connectors and cabling make FPX fixtures easy to install, operate and maintain.

Performance Summary

Delivered Light Output: Up to 20,000 Lumens

Illuminance: 290 FC at 3' (Standard Output, 90 CRI)

Efficacy: 120+ LPW

CRI: 85+ CRI (Standard) 90+ CRI Available

CCT: 5000K -or- 4000K

Lifetime: 75,000 Hours at 25°C

Warranty: 5 Years (See ggled.net for Terms)

Mounting: Surface or Cable Mount, 316SS

Dimensions: Length Varies, Width 2" x Height 2"

Voltage: 120-277 VAC Input

Ambient Temperature (SO): -20°C to 60°C

Ambient Temperature (HO): -20°C to 40°C

Ordering Information

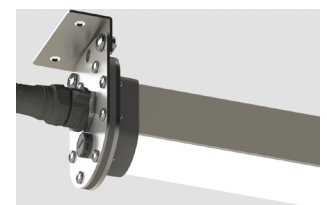
| Product | Length | Lumen Output | Color Temp. | CRI | Dimming | Standalone or Daisychain | Mounting |
|------------|--------------------|---|---------------------------|------------------------------------|---------------------------------------|--|----------------------------|
| FPX | | | | | | | |
| | 4 4-Foot | SO Standard Output 1875 Lumens/Foot | 50K 5000 Kelvin | Blank (standard) 85+ CRI | Blank (standard) No Dimming | Blank (standard) Connectors on Input Only, No Daisy Chain. For Standalone Install | CM Cable Mount |
| | 8 8-Foot | HO High Output 2500 Lumens/Foot | 40K 4000 Kelvin | 90C 90+ CRI | DIM 0-10V Dimming | DC (Daisy Chain) Through Wired with Connectors on Input & Output for Ability to Daisy Chain Fixtures | SM Surface Mount |

Connection Cabling & Mounting

| Cable | Type | Length | Wire |
|------------|--------------|--------|-------------|
| FPX-LDR-6 | Leader Cable | 6ft | 16 AWG SJTW |
| FPX-LDR-30 | Leader Cable | 30ft | 16 AWG SJTW |
| FPX-JMP-1 | Jumper | 1ft | 16 AWG SJTW |
| FPX-JMP-4 | Jumper | 4ft | 16 AWG SJTW |



Cable Mount



Surface Mount

Rev Date 18 0921

STRONG.

SIMPLE.

COMPACT.

FOOD PROCESSING IP69K LUMINAIRE

Product Specifications

Construction & Materials

316 SS Brackets and hardware

Integrated heavy-duty aluminum heat spreader.

Seamless polymeric outer shell provides IP69K ingress protection and is specialized for superior chemical resistance.

All G&G luminaires and components (with the exception of our LED boards and drivers) are proudly manufactured and assembled in the USA.

Regulatory Qualifications

NSF Certified

cULus Listed

UL Listed for Wet Locations

DLC Listed

Lumen & Power Data

| Length & Output | Lumens | Wattage | Amps @120V | Amps @277V |
|-----------------|--------|---------|------------|------------|
| FPX4-SO | 7,500 | 60 | 0.50 | 0.22 |
| FPX4-HO | 10,000 | 80 | 0.67 | 0.29 |
| FPX8-SO | 15,000 | 120 | 1.00 | 0.43 |
| FPX8-HO | 20,000 | 160 | 1.33 | 0.58 |

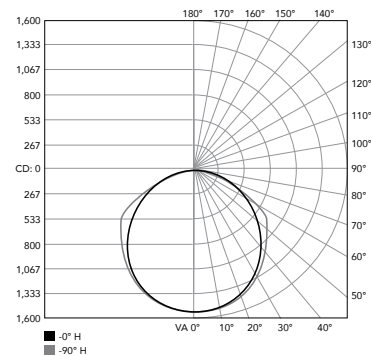
Photometry

FPX Series

Based on DTC Report Test #: 14404-T

Fixture photometry has been conducted by a NVLAP accredited testing laboratory in accordance with IESNA LM-79-08. IESNA LM-79-08 specifies the entire luminaire as the source resulting in a fixture efficiency of 100%.

Polar Candela Distribution

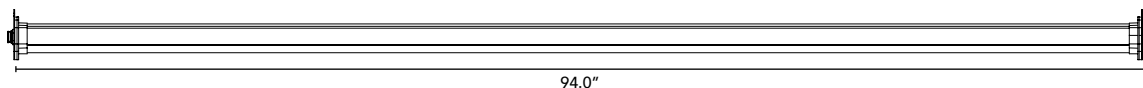


Zonal Lumen Summary

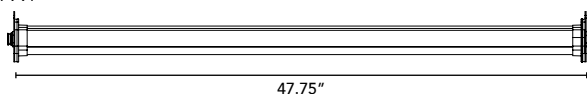
| Zone | Luminaire |
|-------|-----------|
| 0-30 | 24.8% |
| 0-40 | 40.5% |
| 0-60 | 71.1% |
| 0-90 | 95.8% |
| 0-180 | 100% |

Luminaire Dimensions

FPX8



FPX4



FPX4 & FPX8 End-Cap

