



# G&G

**INDUSTRIAL LIGHTING**

[www.ggled.net](http://www.ggled.net)



**TRANSIT LIGHTING CATALOG**

**STRONG.**

**SIMPLE.**

**COMPACT.**





**Highly Engineered LED Lighting  
Systems Designed to Help You  
**MOVE.****



**Purpose-built for transit environments.**

*Designed to NFPA 130 & NFPA 502 standards.*

Guaranteed reliability. Simple installation.  
Minimal maintenance. Low total cost of ownership.

# PRODUCTS / APPLICATIONS

---



Pages 4-7



Rail Tunnel



Pages 8-11



Pit & Track



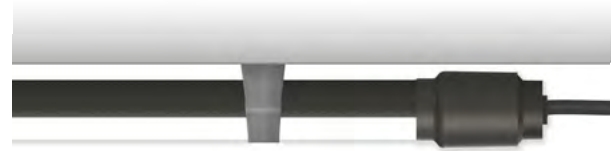
Pages 12-15



Fluorescent Retrofit



Pages 16-19



General Area



Pages 20-23



Hazardous Location



**IP68**  
INGRESS  
CERTIFIED

DIRECT AC  
**DRIVERLESS**

**EMI**  
SILENT





# RTX TUNNEL LINEAR

### Large Wiring Box

Facilitates armored cable thru-wiring without additional splice boxes.

### Quick Disconnect

High quality IP68/IP69K submersible push-and-click connector makes swapping light engines easy.

### Heavy Duty

Durable extruded aluminum housing. Black anodized to prevent corrosion.

### Low Profile

Less than 4" deep to keep the fixture out of the dynamic envelope.

### Quick Latch

Non-metallic quick latch hangers securely clamp LED module into housing. No tools required.

### Fast Install

Snake rack compatible. Or fasten directly to the tunnel wall using wedge anchors.

### Replaceable IP68 LED Module

Permanently sealed direct-AC LED module. Field replaceable without tools in seconds.



# Direct-AC LED Luminaire For Tunnel & Rail

**Long Lifetime Direct-AC Driverless, EMI Silent** Uses modern direct-AC technology to drive LED strings directly from AC line voltage, without a traditional LED driver for extreme reliability and low RF emissions. Compliant to MIL-STD-461E RE102 EMI testing.

**Integrated Wiring Box** Waterproof, sealed wiring box with multiple 3/4" ports to be able to wire armored cabling into and out of the fixture without additional NEMA enclosures.

**Harsh Environment Rated IP68** waterproof, corrosion resistant fixture ensures durability in the harsh environment of transit applications.

**Replaceable LED Module** Permanently sealed LED module with waterproof quick disconnect and latching clips for fast bulb swap; no tools required.

**Buy America Compliant** Engineered and manufactured in New York; Buy America compliant.





**DIRECT AC  
DRIVERLESS**

**EMI  
SILENT**



## DIRECT-AC TUNNEL LIGHTING FIXTURE

### Product Features

#### Replacable IP68 LED Module

Permanently sealed IP68 LED module with waterproof quick disconnect and latching clips for fast replacement - no tools required.

#### Long Lifetime Direct-AC Driverless, EMI Silent

Uses modern direct-AC technology to drive LED strings directly from AC line voltage, without a traditional LED driver for extreme reliability and low RF emissions. Compliant to MIL-STD-461E RE102 EMI testing.

#### Inline Wiring Box

Ability to throughwire armoured cabling reduces the need for additional splice boxes and limits the number of power supply lines.

#### Buy America Compliant

Engineered and manufactured in New York and Buy America compliant, G&G's RTX fixture is built on quality, innovation, and the latest in LED technology.

### Performance Summary

**Delivered Light Output:** Up to 5,000 Lumens

**Efficacy:** Up to 120 LPW

**CRI:** Typical 85 CRI

**CCT:** 4000K & 5000K (other CCT available upon inquiry)

**Lifetime:** 100,000 Hour L70 at 25°C

**Warranty:** 5 Years (See ggled.net for Terms)

**Mounting:** Wall, Rack Mount

**Protection Class:** IP66/68

**Voltage:** 120, 277, 347V Input

## Ordering Information Contact factory for emergency lighting options, alternate lengths, outputs, color temperatures, etc.

Product	Length	Color Temp.	Voltage
<b>RTX</b>	<b>4</b> 4-Foot	<b>50K</b> (standard) 5000 Kelvin	<b>120V</b> 120 VAC Input
		<b>40K</b> 4000 Kelvin	<b>277V</b> 277 VAC Input
			<b>347V</b> 347 VAC Input



OUR PRODUCTS ARE  
**ENGINEERED  
 TESTED  
 MANUFACTURED  
 ASSEMBLED  
 & SHIPPED**  
 FROM ONE FACILITY

# DIRECT-AC TUNNEL LIGHTING FIXTURE

## Product Specifications

### Construction & Materials

Built-in wiring box. 3/4" NPT hubs.  
 Integrated aluminum heat spreader.

Seamless polymeric outer shell provides IP68 ingress protection and is specialized for superior chemical resistance. An additional protective coating is available which integrates a UV inhibitor and UV blocker for outdoor applications.

All G&G luminaires and components (with the exception of our LED boards and drivers) are proudly manufactured and assembled in the USA.

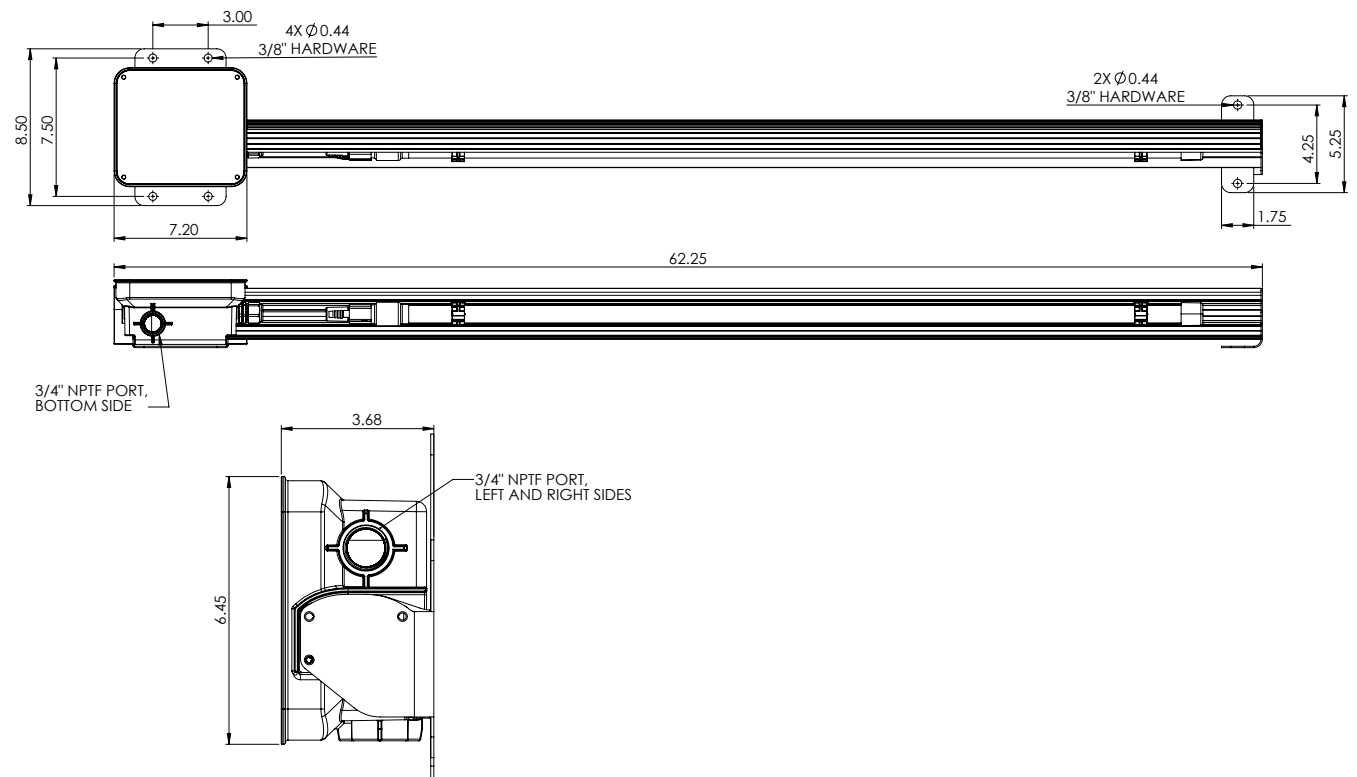
### Regulatory Qualifications

cULus Listed  
 UL Listed for Wet Locations  
 NEMA 4X Rated  
 NFPA 130  
 NFPA 502

## Lumen & Power Data

Model	Lumens	Wattage	Amps @120V	Amps @277V	Amps @347V
RTX4	5,000	42	0.35	0.16	0.13

## Dimensions







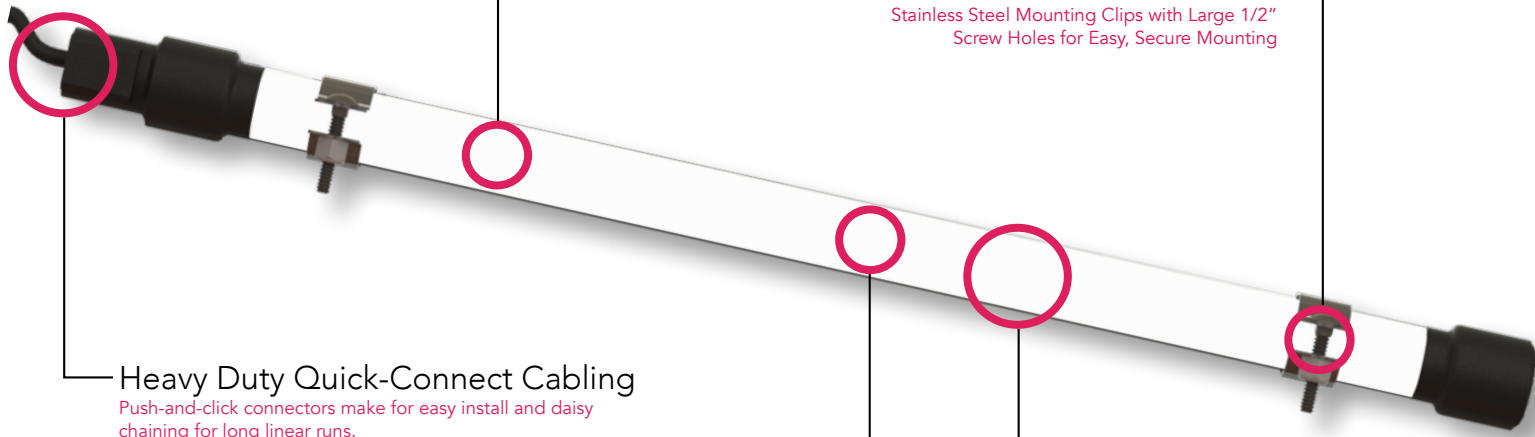
**TRX**  
INDUSTRIAL DRIVERLESS LINEAR

Strong, Lightweight & Low-Profile

1" Low-Profile, Corrosion-Resistant, IK07 Impact Certified Housing

Fast & Secure Installation

Stainless Steel Mounting Clips with Large 1/2" Screw Holes for Easy, Secure Mounting



Heavy Duty Quick-Connect Cabling

Push-and-click connectors make for easy install and daisy chaining for long linear runs.

Sealed IP68 Housing

Waterproof Housing Developed Specifically for Harsh Environments

Maintenance Free Driverless Design

Connects Directly to AC Line Voltage Without an LED Driver For Maximum Reliability



# Direct-AC LED Luminaire for Maintenance Pits & Under-Track

## Low-Profile Aimable Design

Slim 1" round low-profile design enables the TRX fixture to be mounted in almost any location and aimed to direct light where needed.

## Harsh Environment Rated

Engineered for tough environments, the TRX series has an IP68 ingress rating against dust and water and is IK07 impact certified.

## Maintenance-Free Driverless Technology

Connects directly to AC line voltage without a traditional LED driver or electrolytic capacitors for extreme reliability and lifetime.

## Heavy Duty Quick-Connect Cabling

Heavy duty cabling and push-and-click connectors make TRX series fixtures easy to install and daisy chain for long linear runs.





## INDUSTRIAL DRIVERS LED LINEAR LUMINAIRE

### Product Features

#### Waterproof, Dust Tight and Corrosion Resistant

Seamless polymeric outer shell provides IP68 ingress protection against moisture and dust intrusion and is specialized for superior chemical resistance. An additional protective coating is available which integrates a UV inhibitor and UV blocker for outdoor applications.

#### Maintenance Free Direct AC Driverless Design

Connects directly to AC line voltage without an LED driver or electrolytic capacitors, for ease of use and extreme reliability and lifetime. Requires zero maintenance.

#### Compact Low-Profile Housing

1" round patented linear housing provides a remarkably slim low profile allowing installation in almost any application. The single piece enclosure design is lightweight, incredibly easy to mount and creates a modern, sleek result with no seals or gaskets..

#### Heavy Duty Quick-Connect Cabling

Heavy duty cabling and push-and-click connectors make TRX series fixtures easily to install and daisy chain for long linear runs.

### Performance Summary

**Delivered Light Output:** Up to 4,000 Lumens - 1,000 Lumens/Ft

**Efficacy:** 125 LPW

**CRI:** Typical 85 CRI

**CCT:** 5000K & 4000K

**Lifetime:** Designed to last 100,000 Hours at 25°C

**Warranty:** 5 Years (See ggled.net for Terms)

**Mounting:** Ceiling or Wall

**Protection Class:** IP68 Ingress & IK07 Impact

**Voltage:** 120 VAC or 277 VAC Input

**Ambient Rating:** -40°C to 55°C

### Ordering Information

Product	Length	Color Temp.	UV Protection	Through Wired	Backplate	Voltage
<b>TRX</b>						
	<b>2</b> 2-Foot	<b>50K</b> (standard) 5000 Kelvin	<b>Blank</b> (standard) No Coating, Rated for Indoor Use	<b>Blank</b> (standard) Connectors on Input & Output for ability to Daisy Chain fixtures	<b>Blank</b> (standard) No Backplate	<b>120V</b> 120 VAC Input
	<b>4</b> 4-Foot	<b>40K</b> 4000 Kelvin	<b>UVO</b> Outdoor-Rated with UV-Blocking Coating	<b>SE</b> (Single-Ended) Connector on Input Only, No Daisy Chain, for Standalone Install	<b>BKP</b> (Backplate) Easy Mount and Protective Backplate	<b>277V</b> 277 VAC Input

### Power & Connection Accessories

Cable	Type	Length	Wire	Mounting Hardware	Description
TRX-JMP-1	Jumper	1ft	14 ga SOOW	TRX-MNT-NM	Non-Metalic Quick Latch
TRX-JMP-4	Jumper	4ft	14 ga SOOW	TRX-MNT-SS	Stainless Steel Bolt Latch
TRX-JMP-8	Jumper	8ft	14 ga SOOW	TRX-MNT-MAG	Disc Magnet Add-On
TRX-LDR-8	Leader Cable	8ft	14 ga SOOW		

\* TRX-JMP-X-LSZH Jumper To Order 14 ga LSZH

\* TRX-LDR-X-LSZH Leader Cable To Order 14 ga LSZH





OUR PRODUCTS ARE  
**ENGINEERED  
 TESTED  
 MANUFACTURED  
 ASSEMBLED  
 & SHIPPED**  
 FROM ONE FACILITY

## INDUSTRIAL DRIVERS LED LINEAR LUMINAIRE

### Product Specifications

#### Construction & Materials

Convenient push-and-click connectors let you easily and rapidly install Leader Cables and Jumper Cables. Multiple cable lengths support a variety of layouts.

Integrated aluminum heat spreader.

Seamless polymeric outer shell provides IP68 ingress protection and is specialized for superior chemical resistance.

All G&G luminaires and components (with the exception of our LED boards and drivers) are proudly manufactured and assembled in the USA.

#### Electrical System

Power Factor: >0.9

Temperature Rating: Designed to operate in temperatures -40°C to 55°C.

Total Harmonic Distortion: < 20%

Built-In 4KV Surge Protection

#### Regulatory Qualifications

cULus Listed

UL Listed for Wet Locations

NEMA 4X, NEMA 6P Rated

NFPA 130 & 502



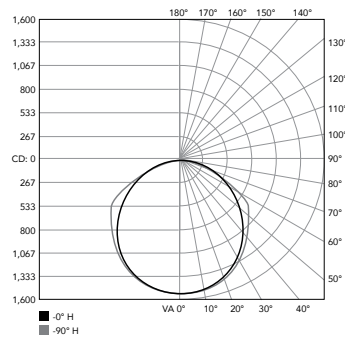
### Photometry

#### TRX Series

Based on DTC Report Test #: 14404-T

Fixture photometry has been conducted by a NVLAP accredited testing laboratory in accordance with IESNA LM-79-08. IESNA LM-79-08 specifies the entire luminaire as the source resulting in a fixture efficiency of 100%.

#### Polar Candela Distribution



#### Zonal Lumen Summary

Zone	Luminaire
0-30	26.2%
0-40	43.2%
0-60	77.4%
0-90	98.5%
0-180	100%

### Lumen & Power Data

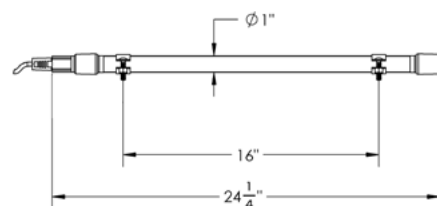
Length & Output	Lumens	Wattage	Amps @120V	Amps @277V
TRX2	2000	16	0.13	0.06
TRX4	4000	32	0.27	0.12

### Maximum Fixture Run (Per 1 Leader Cable)

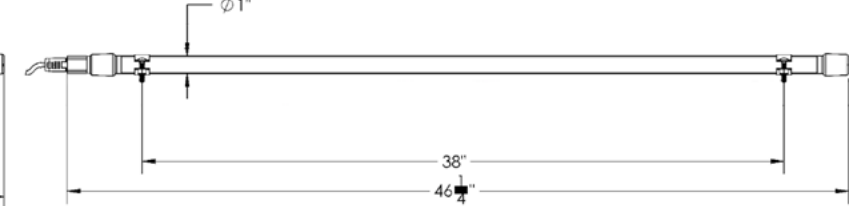
Jumper Cable Length	TRX2 (120V)	TRX2 (277V)	TRX4 (120V)	TRX4 (277V)
JMP1 (1FT)	60 (179')	110 (339')	34 (169')	65 (324')
JMP4 (4FT)	45 (266')	90 (534')	31 (244')	58 (460')
JMP8 (8FT)	40 (392')	80 (792')	28 (328')	52 (616')

### Dimensions

TRX2



TRX4





# PRX

## PLATFORM RETROFIT

### LED Technology

State of the art LED technology to ensure long lifetime and high efficacy. Metal core LED module for superior heat dissipation.

### Strong. Simple. Compact.

Patented co-extruded aluminum and copolyester housing developed specifically for harsh environments. Certified to the highest ingress and impact protection ratings available, IP68 and IK07.

### Direct-AC Driverless

No external driver for fast installation and replacement. Reduces risk of failure & provides extra long life. EMI silent.

### "Fixture Lock"

Internally developed for this application, this unique feature locks the fixture in place and prevents it from rotating. Fully customizable to fit all types of tombstones in the field.



# LED Retrofit Fixture For Station Platform Lighting

## Built for Harsh Environments

Our patented co-extruded aluminum and copolyester housing was developed specifically for harsh environments. Certified to the highest ingress and impact protection available, IP68 and IK07.

## "Fixture Lock" Anti-Rotation Feature

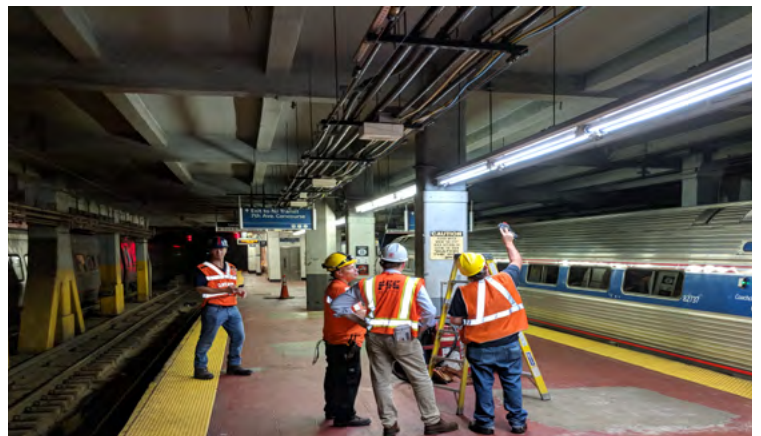
This unique feature locks the fixture in place and prevents it from rotating. Fully customizable to fit all types of tombstones in the field.

## Long Lifetime Direct-AC Driverless

Connects directly to AC line voltage without a traditional LED driver or electrolytic capacitors for extreme reliability and 100,000 hour lifetime. Metal core LED module for superior heat dissipation.

## FTA Buy America Compliant

Engineered and manufactured in New York and Buy American compliant, G&G's PRX fixture is built on quality, innovation and the latest in LED technology.





# INDUSTRIAL LIGHTING

T 800.285.6780 E sales@ggled.net

www.ggled.net



## LED STATION LIGHTING DIRECT-AC RETROFIT FIXTURE

### Product Features

#### Built for Harsh Environments:

Our patented co-extruded aluminum and copolyester housing was developed specifically for harsh environments. Certified to the highest ingress and impact protection ratings available, IP68 and IK07.

#### "Fixture Lock" Anti-Rotation Feature:

Internally developed for this application, this unique feature locks the fixture in place and prevents it from rotating. Fully customizable to fit all types of tombstones in the field.

#### Long Lifetime Direct-AC Driverless:

Connects directly to AC line voltage without a traditional LED driver for extreme reliability and lifetime. Metal core LED module for superior heat dissipation.

#### FTA Buy America Compliant:

Engineered and manufactured in New York and Buy America compliant, G&G's PRX fixture is built on quality, innovation, and the latest in LED technology.

### Performance Summary

Delivered Light Output: Up to 4,500 Lumens

Efficacy: 120 LPW

CRI: Typical 85 CRI

CCT: 5000K, 4000K & 3500K

Lifetime: 100,000 Hour L70 @25C

Warranty: 5 Years

Mounting: Single Pin FA8 Base (T8/T12)

Dimensions: Length Varies, Diameter 1.0"

Protection Class: IP68 Ingress & IK07 Impact

Voltage: 120 VAC or 277 VAC Input

EMI: Tested to FCC Title 47, Part 15 Subpart B and MIL-STD-461E, RE102

Ambient Rating: -40°C to 60°C

### Ordering Information

Product	Length	Lumens	Color Temp.	Voltage
<b>PRX</b>				
<b>4</b> 4-Foot		<b>20L</b> 2000 Lumens	<b>50K</b> 5000 Kelvin	<b>120V</b> 120 VAC Input
<b>6</b> 6-Foot		<b>30L</b> 3000 Lumens	<b>40K</b> 4000 Kelvin	<b>277V</b> 277 VAC Input
		<b>45L</b> 4500 Lumens	<b>35K</b> 3500 Kelvin	





OUR PRODUCTS ARE  
**ENGINEERED  
 TESTED  
 MANUFACTURED  
 ASSEMBLED  
 & SHIPPED**  
 FROM ONE FACILITY

# LED STATION LIGHTING DIRECT-AC RETROFIT FIXTURE

## Product Specifications

### Construction & Materials

Integrated aluminum heat spreader.

Seamless polymeric outer shell provides IP68 ingress protection and is specialized for superior chemical resistance.

All G&G luminaires and components are proudly manufactured and assembled in the USA, of US and imported components. Our products are FTA Buy America.

Gold plated contact pins.

### Electrical System

Power Factor: >0.95

Input Power: Stays consistent over life.

Temperature Rating: Designed to operate in temperatures -40°C to 60°C.

Total Harmonic Distortion: < 20%

### Regulatory Qualifications

cULus Listed

UL Listed for Wet Locations

MIL-STD-461E RE102

FCC Title 47 EMI/RFI Compliance

NFPA 130

NFPA 502

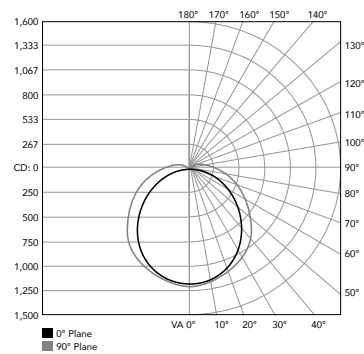


## Photometry

### PRX Series

Fixture photometry has been conducted by a NVLAP accredited testing laboratory in accordance with IESNA LM-79-08. IESNA LM-79-08 specifies the entire luminaire as the source resulting in a fixture efficiency of 100%.

### Polar Candela Distribution



### Zonal Summary

Zone	Luminaire
0-40	38.9%
0-60	69.2%
0-90	94.2%
90-180	5.8%

## Electrical Data

Length & Output	Lumens	Wattage	Amps @120V	Amps @277V
PRX4-20L	2000	17.2W	0.14	0.06
PRX4-30L	3000	25.8W	0.22	0.09
PRX6-30L	3000	23.3W	0.19	0.08
PRX6-45L	4500	35.0W	0.29	0.13



# VPX

VAPORSEALED LINEAR



Seamless Low-Profile Design  
Innovative 1" Round Low-Profile Design

Permanently Sealed  
IP66/67 Rated, Debris Free

Maintenance Free Driverless Design  
Connect Directly to AC Line Voltage without an LED Driver for Maximum Reliability



# Vaporsealed LED Linear for Harsh Environments

**Permanently Sealed, Assembly Free Housing** A seamless co-polyester and aluminum extrusion, with no seals, gaskets or clips. The result is a chemically welded, single piece enclosure with no removable parts for a simple, assembly free installation.

**Compact, High Output Design** The low-profile 1" design is a strong, compact luminaire that is installation friendly and packs a punch at up to 10,000 lumens, 20 times the lumen density of a standard vaportight.

**Superior Water, Chemical & UV Resistance** A seamless co-polyester housing provides IP65, IP66 and IP67 ingress protection and effectively prevents debris intrusion and build up. Specialized for superior chemical resistance to withstand prolonged exposure to harsh environments.

**Maintenance Free, Driverless Design** Innovative driverless design allows the fixture to connect directly to AC line voltage without a traditional LED driver for extreme reliability and lifetime.





# INDUSTRIAL LIGHTING

T 800.285.6780 E sales@ggled.net

www.ggled.net



**DIRECT AC DRIVERLESS**

**IP66 IP67 CERTIFIED**



**EMI SILENT**



## Low-Profile Driverless Vaporsealed LED Linear Luminaire

### Product Features

#### Compact Low-Profile Design

1" round patented linear housing provides a remarkably slim low profile allowing installation in almost any application. The design is lightweight, incredibly easy to mount and creates a modern, sleek result.

#### Maintenance-Free Driverless Design

Connects directly to AC line voltage without an LED driver or electrolytic capacitors, for extreme reliability and lifetime. Requires zero maintenance.

#### Superior Waterproof Chemical & UV Resistance

Seamless polymeric outer shell provides maximum ingress protection and is specialized for superior chemical resistance. An additional protective coating is available which integrates a UV inhibitor and UV blocker for outdoor applications.

#### Coextruded Copolyester/Aluminum Housing

Our patented process combines copolyester and aluminum together, with no seals or gaskets. The result is a single piece enclosure with excellent heatsinking characteristics for long lifetime.

### Performance Summary

**Delivered Light Output:** 5,000 Lumens (VPX4) or 10,000 Lumens (VPX8)

**Efficacy:** 120 LPW

**CRI:** Typical 85 CRI

**CCT:** 4000K & 5000K

**Lifetime:** Designed to last 100,000 Hours at 25°C

**Warranty:** 5 Years (See ggled.net for Terms)

**Mounting:** Ceiling or Wall

**Dimensions:** Length Varies, Width 1.25" x Height 1.75" Mounted

**Protection Class:** IP65, IP66, IP67

**Voltage:** 120 VAC or 277 VAC Input

**Lens:** Copolyester, Diffused to Limit Glare & Evenly Spread Light Output

**Ambient Temperature:** -40°C to 60°C

**Surge Protection:** Built-in 4KV Surge Protection

## Ordering Information

Product	Length	Color Temp.	UV Protection	Voltage
<b>VPX</b>				
	<b>2</b> 2-Foot	<b>50K</b> (standard) 5000 Kelvin	<b>Blank</b> (standard) No Coating, Rated for Indoor Use	<b>120V</b> 120 VAC Input
	<b>4</b> 4-Foot	<b>40K</b> 4000 Kelvin	<b>UVO</b> Outdoor-Rated with UV-Blocking Coating	<b>277V</b> 277 VAC Input
	<b>8</b> 8-Foot			

## Mounting

Mounting Hardware	Description
VPX-MNT-NM	Non-Metalic Quick Latch
VPX-MNT-SS	Stainless Steel Bolt Latch





OUR PRODUCTS ARE  
**ENGINEERED  
 TESTED  
 MANUFACTURED  
 ASSEMBLED  
 & SHIPPED**  
 FROM ONE FACILITY

# Low-Profile Driverless Vaporsealed LED Linear Luminaire

## Product Specifications

### Construction & Materials

Built-in 6' SJEOW Power Cord

Integrated aluminum heat spreader.

Seamless polymeric outer shell provides IP68 ingress protection and is specialized for superior chemical resistance. An additional protective coating is available which integrates a UV inhibitor and UV blocker for outdoor applications.

All G&G luminaires and components (with the exception of our LED boards and drivers) are proudly manufactured and assembled in the USA.

### Regulatory Qualifications

- cULus Listed
- UL Listed for Wet Locations
- NSF Rated
- NEMA 4X Rated
- NFPA 130 & 502

### Lumen & Power Data

Length & Output	Lumens	Wattage	Amps @120V	Amps @277V
VPX2	2,500	21	0.17	0.75
VPX4	5,000	42	0.35	0.15
VPX8	10,000	84	0.70	0.30

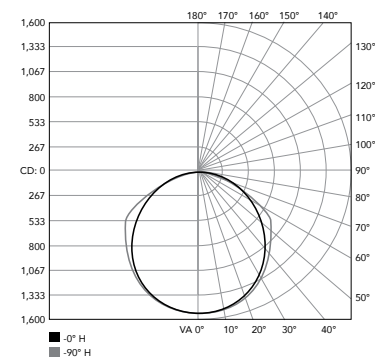
## Photometry

### VPX Series

Based on DTC Report Test #: 14404-T

Fixture photometry has been conducted by a NVLAP accredited testing laboratory in accordance with IESNA LM-79-08. IESNA LM-79-08 specifies the entire luminaire as the source resulting in a fixture efficiency of 100%.

### Polar Candela Distribution



### Zonal Lumen Summary

Zone	Luminaire
0-30	26.2%
0-40	43.2%
0-60	77.4%
0-90	98.5%
0-180	100%

## Dimensions

### VPX8



### VPX4





**CLASS-1  
DIV-2  
RATED**



**CLASS-2  
DIV-2  
RATED**



**Low Profile, Seamless Polymeric Exterior**

*Slim 1" Round Low-Profile Housing with IP68/IP69K Ingress Protection and Extreme Chemical Resistance*

**Quick-Connect**

*Secure Low-Voltage Connections for a Simple, Quick Installation*

**Heavy Duty Cabling**

*Low Smoke Zero Halogen Heavy Duty Cabling*



# Linkable IP68/69K LED Linear for Hazardous Locations

## Approved for Use in Hazardous Locations

Certified as a Class 1, Division 2, Groups A-D, T4 and Class 2, Groups E-G, T4 Lighting Solution.

## Low Profile Design

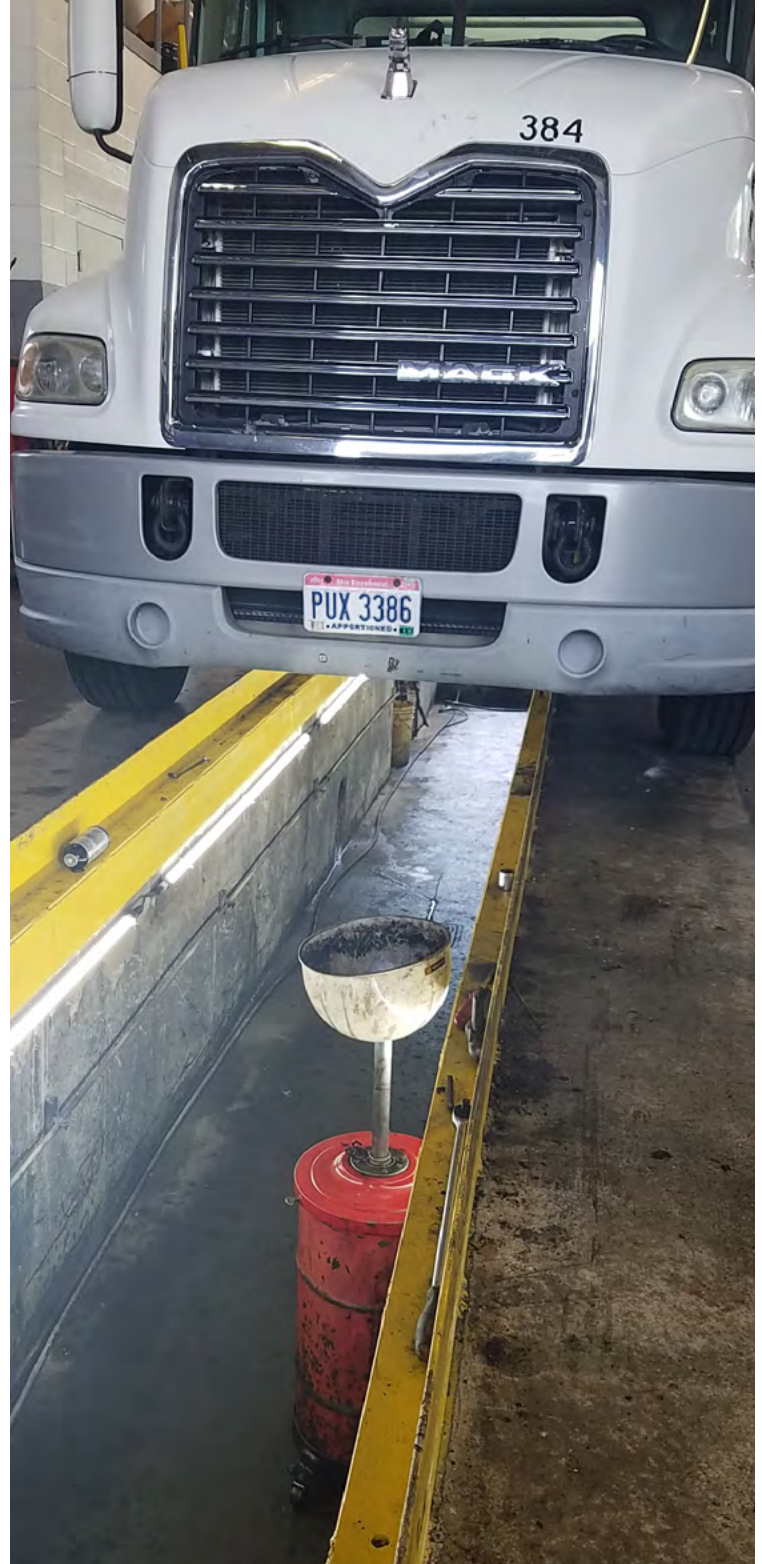
Slim, 1" round low-profile design enables the fixtures to be aimed and mounted in almost any location. The end result is a sleek, clean and modern appearance.

## Permanently Sealed

Seamless housing prevents debris from accumulating inside. No assembly required.

## Heavy Duty Quick-Connect Cabling

Heavy duty cabling and push-and-click connectors make HLX series fixtures easy to install and daisy chain for long linear runs.



# G&G

## INDUSTRIAL LIGHTING

T 800.285.6780 E sales@ggled.net

www.ggled.net



**CLASS-1**  
**DIV-2**  
RATED

**CLASS-2**  
**DIV-2**  
RATED

**IP68**  
**IP69K**  
CERTIFIED



## Low-Profile Linkable IP68/69K LED Linear Luminaire for Hazardous Locations

### Product Features

**Class 1, Division 2 Rated & Class 2, Division 2**  
Certified for Hazardous Locations Class 1, Division 2 Groups A-D, T4 and Class 2, Division 2 Groups E-G, T4

### Heavy Duty Quick-Connect Cabling

Convenient push-and-click connectors and cabling make HLX Series fixtures easy to install and daisy chain.

### Low-Profile Design

1" round patented, innovative linear housing produces a remarkably slim profile allowing the HLX series to go where other fixtures simply cannot.

### Superior Ingress Protection & Chemical Resistance

Seamless polymeric outer shell provides IP68/IP69K ingress protection and is specialized for superior chemical resistance.

### Performance Summary

**Delivered Light Output:** Up to 12,000 Lumens

**Efficacy:** Up to 160 LPW

**CRI:** Typical 85 CRI

**CCT:** 5000K & 4000K

**Lifetime:** Designed to last 100,000 Hours at 25°C

**Warranty:** 5 Years (see ggled.net for terms)

**Mounting:** Ceiling or Wall

**Run Length:** Up to 72' of luminaires (not including jumpers)

**Ambient Temperature:** -40°C to 55°C

## Ordering Information

Product	Length	Lumen Output	Color Temp.	Through Wired
<b>HLX</b>				
<b>2</b> 2-Foot		<b>SO</b> Standard Output 1000 Lumens/Ft	<b>50K</b> 5000 Kelvin	<b>Blank</b> (standard) Connectors on Input & Output for ability to Daisy Chain fixtures
<b>4</b> 4-Foot		<b>HO</b> High Output 1500 Lumens/Ft	<b>40K</b> 4000 Kelvin	<b>SE</b> (Single-Ended) Connector on Input Only, No Daisy Chain, for Standalone Install
<b>6</b> 6-Foot				
<b>8</b> 8-Foot				

## Power & Connection Accessories

Cable	Type	Length	Wire	Power Supply	Max Output	Enclosure	Voltage
HLX-JMP-1	Jumper	1ft / End-to-End	14 ga SOOW	HLX-PSU-80	80W	IP67	120-277 VAC
HLX-JMP-4	Jumper	4ft	14 ga SOOW	HLX-PSU-120	120W	IP67	120-277 VAC
HLX-JMP-8	Jumper	8ft	14 ga SOOW	HLX-PSU-240	240W	IP67	120-277 VAC
HLX-LDR-8	Leader Cable	8ft	14 ga SOOW	HLX-PSU-320	320W	IP67	120-277 VAC
				HLX-PSU-480	480W	IP67	120-277 VAC
				HLX-PSU-600	600W	IP67	120-277 VAC

Mounting Hardware	Description
HLX-MNT-NM	Non-Metallic Quick Latch
HLX-MNT-SS	Stainless Steel Bolt Latch





OUR PRODUCTS ARE  
**ENGINEERED  
 TESTED  
 MANUFACTURED  
 ASSEMBLED  
 & SHIPPED**  
 FROM ONE FACILITY

# HAZARDOUS LOCATION LINEAR LED LUMINAIRE

## Product Specifications

### Construction & Materials

Convenient push-and-click connectors let you easily and rapidly install Leader Cables and Jumper Cables. Multiple cable lengths support a variety of layouts.

Embedded aluminum heatsink provides ample cooling for a long lifetime and allows the fixture to operate in cold and hot weather environments.

Seamless copolyester outer shell provides IP68/IP69K ingress protection and is specialized for superior chemical resistance.

All G&G luminaires and components (with the exception of our LED boards and drivers) are proudly manufactured and assembled in the USA.

### Electrical System

Power Factor: 0.9 nominal

Input Power: Stays consistent over life

Temperature Rating: Designed to operate in temperatures -40°C to 55°C

Total Harmonic Distortion: < 20%

### Regulatory Qualifications

Class 1, Division 2 Groups A, B, C, D, and Class 2, Division 2 Groups E, F, & G ETL Listed

IP68/IP69K system



**CLASS-1  
 DIV-2  
 RATED**

**CLASS-2  
 DIV-2  
 RATED**

**IP68  
 IP69K  
 CERTIFIED**

**IK07  
 IMPACT  
 CERTIFIED**

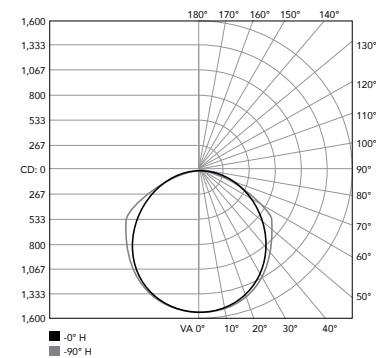
## Photometry

### HLX Series

Based on DTC Report Test #: 14404-T

Fixture photometry has been conducted by a NVLAP accredited testing laboratory in accordance with IESNA LM-79-08. IESNA LM-79-08 specifies the entire luminaire as the source resulting in a fixture efficiency of 100%.

### Polar Candela Distribution



### Zonal Lumen Summary

Zone	Luminaire
0-30	26.2%
0-40	43.2%
0-60	77.4%
0-90	98.5%
0-180	100%

## Lumen & Power Data

Length & Output	5000K		4000K		Fixture Watts	Fixtures Supported per Power Supply					
	Lumens	Lumens Per Watt	Lumens	Lumens Per Watt		PSU-80	PSU-120	PSU-240	PSU-320	PSU-480	PSU-600
HLX8 - SO	8,000 L	160 LPW	7,600 L	150 LPW	50 W	1	2	4	5	8	10
HLX6 - SO	6,000 L	160 LPW	5,700 L	150 LPW	37 W	2	3	6	7	9	10
HLX4 - SO	4,000 L	160 LPW	3,800 L	150 LPW	25 W	3	4	8	10	13	15
HLX2 - SO	2,000 L	160 LPW	1,900 L	150 LPW	12 W	6	8	14	20	22	22
HLX8 - HO	12,000 L	150 LPW	11,400 L	140 LPW	80 W	0	1	2	3	5	6
HLX6 - HO	9,000 L	150 LPW	8,550 L	140 LPW	60 W	1	1	3	4	7	8
HLX4 - HO	6,000 L	150 LPW	5,700 L	140 LPW	40 W	1	2	5	7	9	9
HLX2 - HO	3,000 L	150 LPW	2,850 L	140 LPW	20 W	3	4	9	13	16	16

# BRING LIGHT ANYWHERE



## **STRONG.**

Engineered and Tested to the Extremes



## **SIMPLE.**

Easy Installation and Maintenance



## **COMPACT.**

Low-Profile LED Products