



G&G

INDUSTRIAL LIGHTING

2026

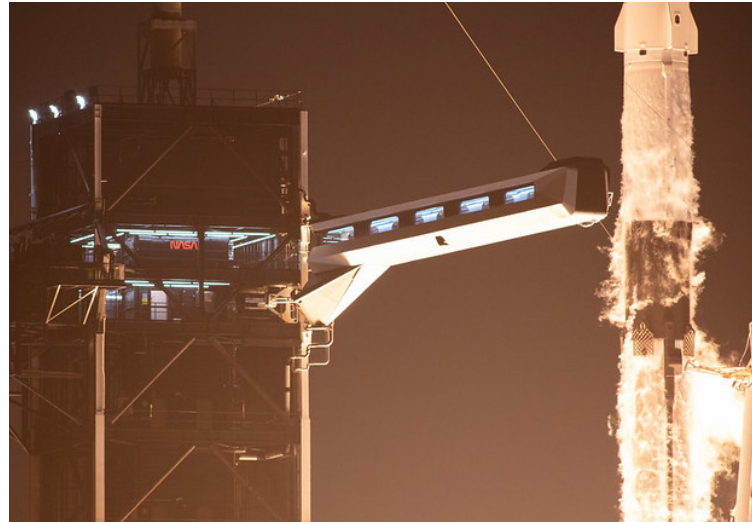
Industrial Catalog

Unique Lighting Solutions
for Harsh Environments



GPX Series

Top two floors of SpaceX Launch Tower and crew arm walkway, Pad LC-39A; At SpaceX's Emergency Egress Training Facility Kennedy Space Center, FL



SpaceX
Case Study



Contents

About G&G 2

G&G Guarantee 3

American-Made LED Lighting 4

Applications

Industrial 5

Food Processing 6

Infrastructure 7

Hazardous Location 8

Agriculture 9

Automotive 10

Featured Products

WPX: Harsh Environment 12

FPX: Food Processing 13

HLX: Hazardous Location 14

GPX: General Purpose 15

TRX: Industrial Driverless 16

VPX: Vaporsealed 17

RRX: Radiation Resistant 18

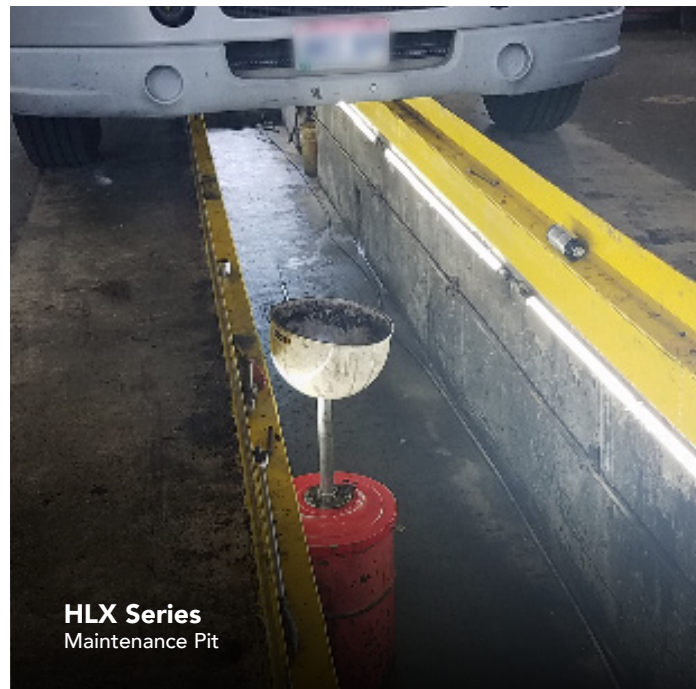
EDGE: RGB Outdoor 19

Certification Glossary 20

Mounting Accessories 21



WPX Series
Production Floor



HLX Series
Maintenance Pit



VPX Series
Canopy / Awning

GPX Series

Noble Public School District, The Den: Fine Arts Auditorium and Gymnasium
Noble, OK



About G&G

At G&G Industrial Lighting, we don't just build lights—we engineer solutions. We're a team of problem-solvers focused on creating tough, high-performance lighting that thrives in the world's harshest environments. Whether it's the steamy mist of a car wash, the rigorous demands of food processing, the heavy-duty grind of industrial manufacturing, or the unforgiving elements of mining, we've got you covered. Our LED lighting solutions are purpose-built to meet the unique challenges of each application. We listen to our customers, leveraging their insights and combining them with our own deep industry expertise to create products that truly fit their needs.

It's why our lights shine bright where others flicker out.

From automotive services and mass transit, infrastructure to agriculture and beyond, we're committed to delivering unmatched durability and dependable, long-lasting performance. At G&G, it's not just about lighting up a space; it's about lighting it up right—every single time.

And we don't stop at great products. Our customer support is responsive and easy to reach, and our warranty process is straightforward because we believe in putting our customers first, every step of the way.

Our G&G GUARANTEE to You

Our continuous innovation ensures we deliver specialized industrial lighting tailored to your needs. Partnering with us means prioritizing your unique requirements and collaborating from start to finish to provide a durable, purpose-built solution that thrives in your environment.

CUSTOMER 1ST APPROACH

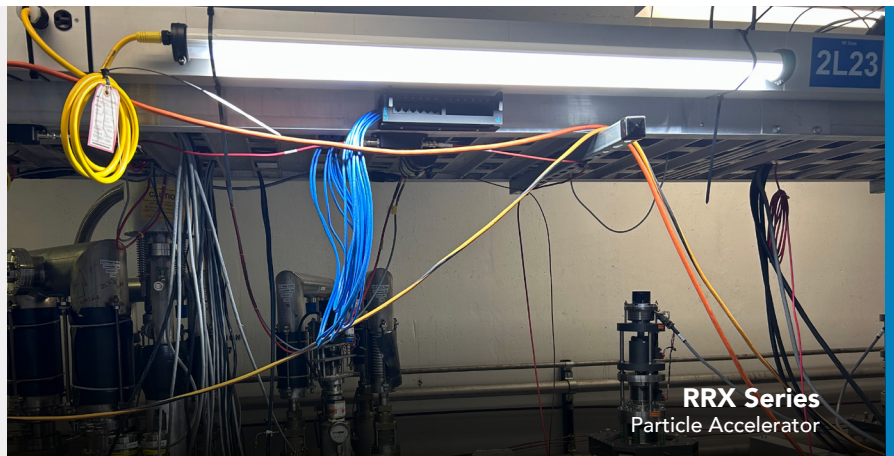
We put our customers first in everything we do—from our thoughtful product designs to responsive customer support and simple warranty process.



TRX Series
Platform Lighting

DURABILITY

We build LED lighting products that withstand the harshest environments and deliver dependable, long-term performance.



RRX Series
Particle Accelerator

PURPOSE-BUILT PRODUCT

We use our knowledge to build products that meet the specific needs and challenges of each application's unique environment.



HLX Series
Maintenance Pit

American-Made LED Lighting

BAA & BABAA Compliant

G&G Industrial Lighting is fully compliant with both the Buy American Act (BAA) and the Build America, Buy American Act (BABAA), ensuring that its products meet the rigorous standards set forth by these federal regulations. As part of its commitment to supporting U.S. manufacturing and strengthening the domestic economy, G&G Industrial Lighting sources the majority of its materials and components from U.S.-based suppliers, and our products are fabricated solely

in upstate New York. By adhering to these acts, G&G guarantees that our lighting solutions are not only high-quality and durable, but also align with government procurement policies designed to promote American-made goods and foster job creation in the U.S. manufacturing sector. This compliance underscores G&G's dedication to delivering reliable, American-made products while contributing to our country's economic growth and resilience.



Acosta Bridge
Case Study



EDGE Series
Acosta Bridge,
Jacksonville, FL



Linear Light For **Industrial**

- Mining
- Chemical & Petroleum
- Workstation
- Manufacturing Facilities
- Conveyor Belts
- Tunnel & Accessways
- Machine Lighting
- Construction Equipment
- Municipal Equipment

HLX Series
MSHA-Approved Mine Lighting

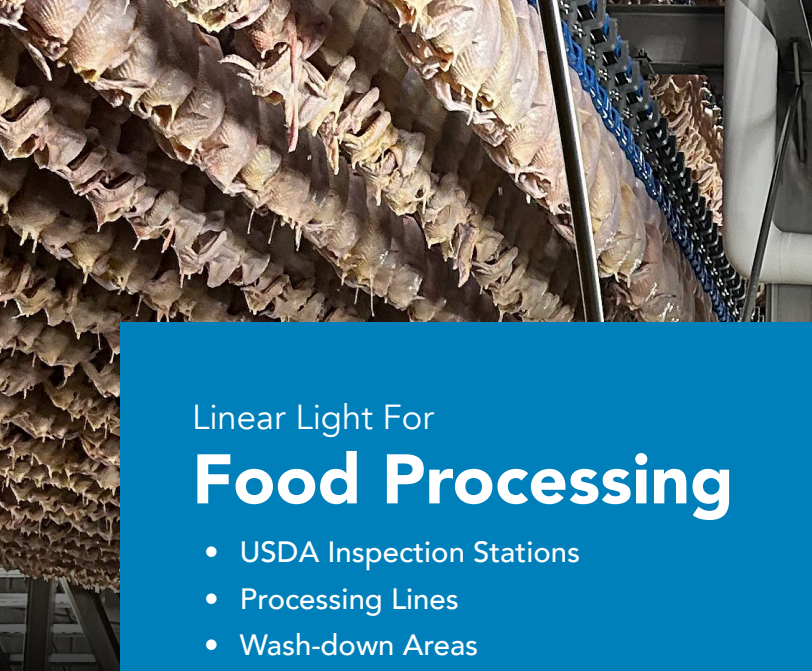
KEY PRODUCTS

- HLX: Hazardous Location
- WPX: Harsh Environment
- GPX: General Purpose

Superior Lighting. Superior Results.

In industrial environments, the right lighting is a necessity. Our LEDs are specifically engineered to meet the rigorous demands of facilities where performance, durability, safety, and operational efficiency are critical. Built with premium components, our solutions are designed to excel in harsh environments, offering extreme energy efficiency and exceptional longevity. This reduces operating costs and slashes maintenance needs. Lightweight, low-profile, and push-and-click cabling, make G&G's lights easy to install in areas others simply cannot go.





Linear Light For **Food Processing**

- USDA Inspection Stations
- Processing Lines
- Wash-down Areas
- Cold Storage
- Industrial Scale Facilities
- Loading Docks
- Flash Freezers



FPX Series
Poultry Processing Line

KEY PRODUCTS

- FPX: Food Processing
- WPX: Harsh Environment
- GPX: General Purpose

Durability, Safety, Efficiency: Where It Matters Most.

G&G's LEDs are designed for the extreme demands of food processing facilities, including wash-downs, chemical sprays, cold storage, and thermal shocks. Built with corrosion-resistant materials, they deliver reliable performance, reduce energy by up to 70%, and last up to 100,000 hours, minimizing maintenance and downtime. NSF-certified, IP69K-rated, IK10 impact, and FDA-compliant, G&G's USA-made lights meet the lighting requirements set forth by the USDA and ensure safety, hygiene, and efficiency, keeping food processing operations smooth and reliable.



WPX Series
Facility Lighting



WPX Series
Processing Line



Linear Light For **Infrastructure**

- Bridges
- Tunnels
- Pedestrian Walkways
- Parking Garages
- Ports
- Wastewater
- Awning / Canopy
- Perimeter / Cove Lighting
- Signage Lighting

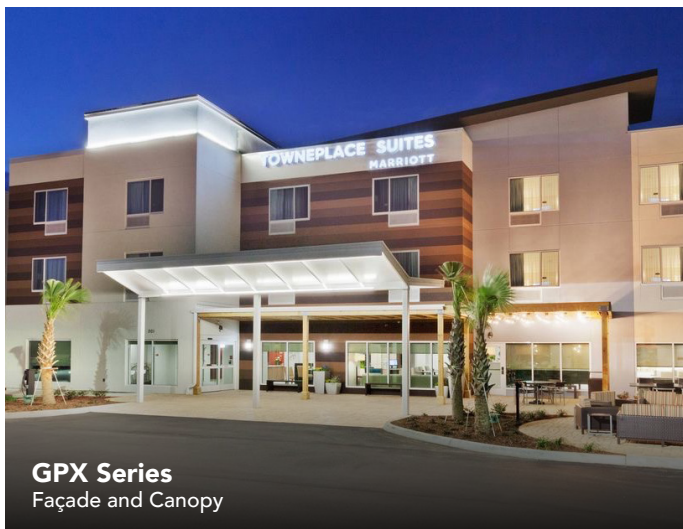
EDGE Series
Pedestrian Bridge

KEY PRODUCTS

- GPX: General Purpose
- WPX: Harsh Environment
- HLX: Hazardous Location
- *EDGE*: Outdoor RGB

Lighting Solutions that Power Safety and Efficiency.

G&G delivers reliable, durable, and efficient LED solutions for critical infrastructure like airports, bridges, tunnels, and wastewater facilities. Built to excel in challenging environments, our luminaires reduce energy use by up to 70% and minimize maintenance costs with extreme longevity. Proudly made in the USA, G&G's lighting is easy to control, enhances safety and visibility while tackling corrosion and tight spaces. We provide innovative solutions for essential projects that keep cities running.



GPX Series
Façade and Canopy



HLX Series
Wastewater Treatment Plant



Linear Light For **Hazardous Locations**

- Oil & Lube Maintenance Pits
- Grain Silos
- Pulp & Paper
- Distilleries
- Chemical Manufacturing
- Paint Booths
- Radiation (Particle Accelerators)

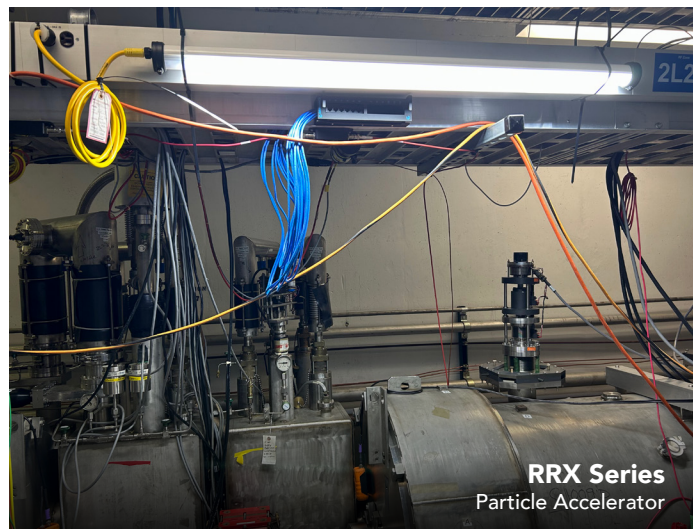
HLX Series
Control Panel

KEY PRODUCTS

- HLX: Hazardous Location
- RRX: Radiation Resistant

Engineered for Safety, Built to Perform.

G&G Industrial Lighting delivers durable, energy-efficient LED solutions for hazardous environments like oil pits, grain silos, chemical plants, and paint booths. Rated Class 1, Division 2 and Class 2, Division 2, G&G's luminaires excel in areas with flammable vapors, dust, and extreme conditions. They enhance safety with bright, uniform light, reduce energy costs by up to 70%, and minimize maintenance. Easy to install and proudly made in the USA, G&G ensures compliance, reliability, and long-term performance.





GPX Series
Equestrian Barn

Linear Light For
Agriculture

- Pullet / Laying Barns
- Barn Lighting
- Equipment Garage Lighting
- Machine Lighting
- Cold Storage

KEY PRODUCTS

- WPX: Harsh Environment
- FPX: Food Processing
- VPX: Vaporsealed

Your job doesn't stop. Neither do we.

G&G Industrial Lighting provides durable, efficient LED solutions for agricultural applications, including pullet barns, and general barn lighting. Designed to withstand harsh farm environments, G&G's IP68-rated, corrosion-resistant luminaires enhance animal productivity, improve safety, and reduce energy and maintenance costs. Built for longevity and efficiency, G&G delivers a high return on investment, ensuring reliable lighting that thrives in demanding agricultural settings.



VPX Series
Equipment Garage



FPX Series
Pullet Barn



Linear Light For **Automotive**

- Oil Bays
- Maintenance Pits
- Auto Care Task Lighting
- Paint Booths
- Detailing Bays
- Car Washes (Tunnels, Self-Serve, IBA)
- Exterior (Signage, Canopies)
- Facility Lighting

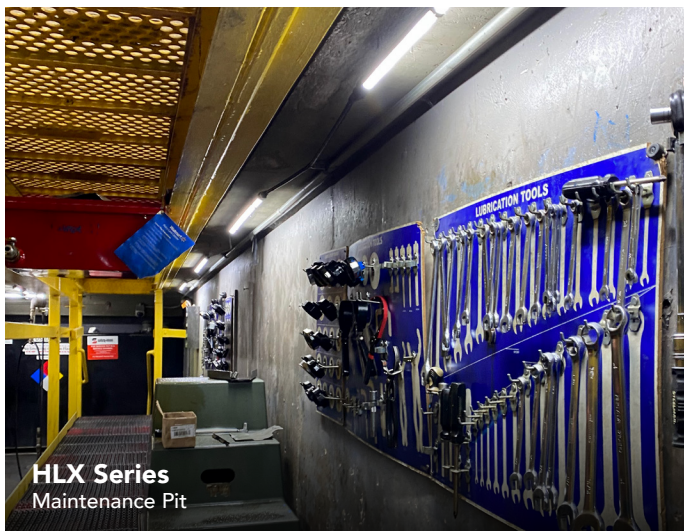
WPX Series
Oil & Lube Task Lighting

KEY PRODUCTS

- WPX: Harsh Environment
- HLX: Hazardous Location
- TRX: Industrial Driverless

Every Car Deserves to Shine

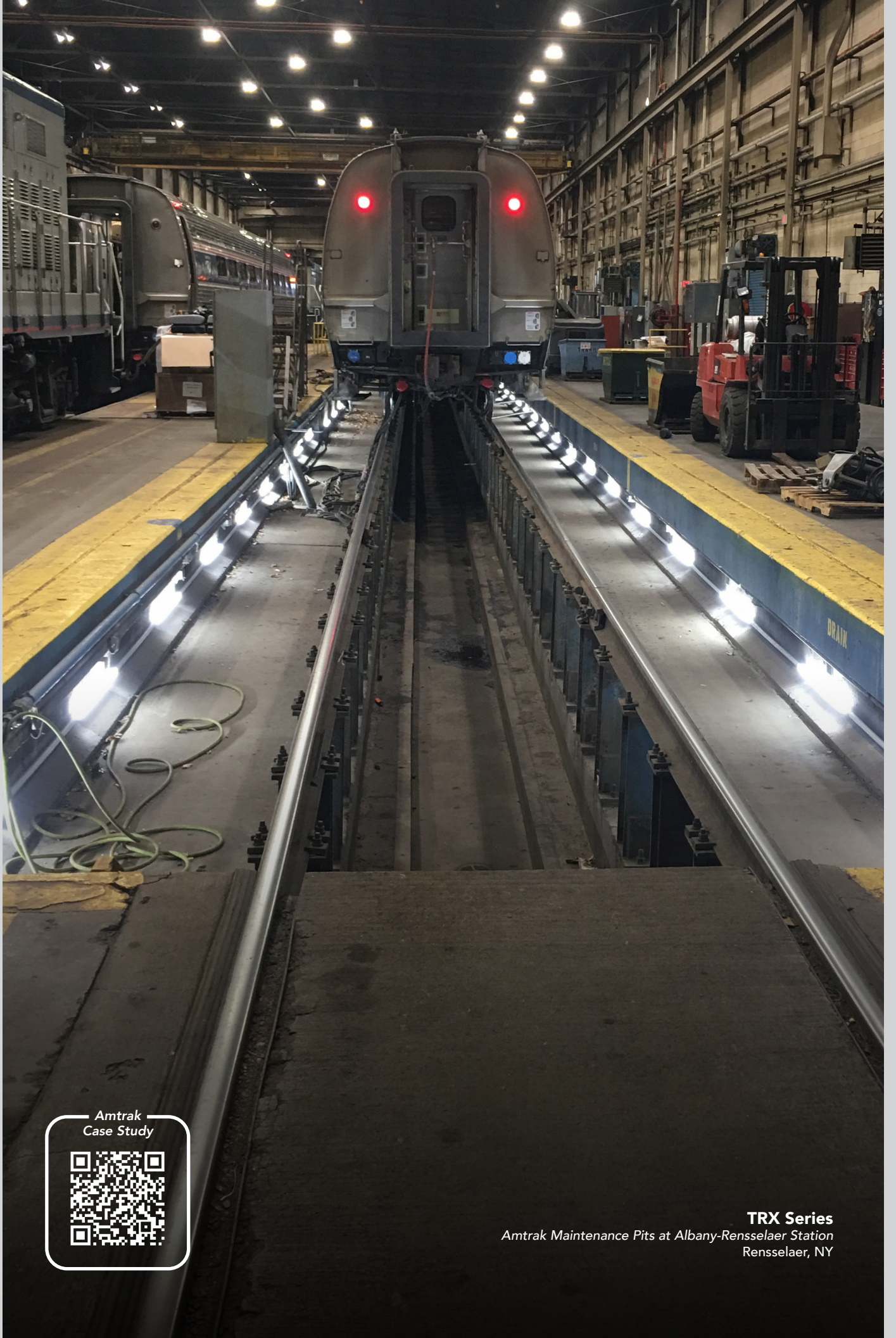
G&G Industrial Lighting delivers durable, energy-efficient LED solutions for automotive service environments like oil bays, maintenance pits, and paint booths. Built to withstand oil, grease, moisture, and chemicals, G&G's sealed, corrosion-resistant fixtures provide bright, uniform light for improved safety and precision. High-CRI lighting ensures true color accuracy for flawless paint applications. With up to 100,000-hour lifespans and 70% energy savings, G&G reduces downtime and costs while enhancing productivity.



HLX Series
Maintenance Pit



WPX Series
Detailing Bay



Amtrak
Case Study



TRX Series
Amtrak Maintenance Pits at Albany-Rensselaer Station
Rensselaer, NY



IP68
IP69K
CERTIFIED

IK07
IMPACT
CERTIFIED

NEMA
4X

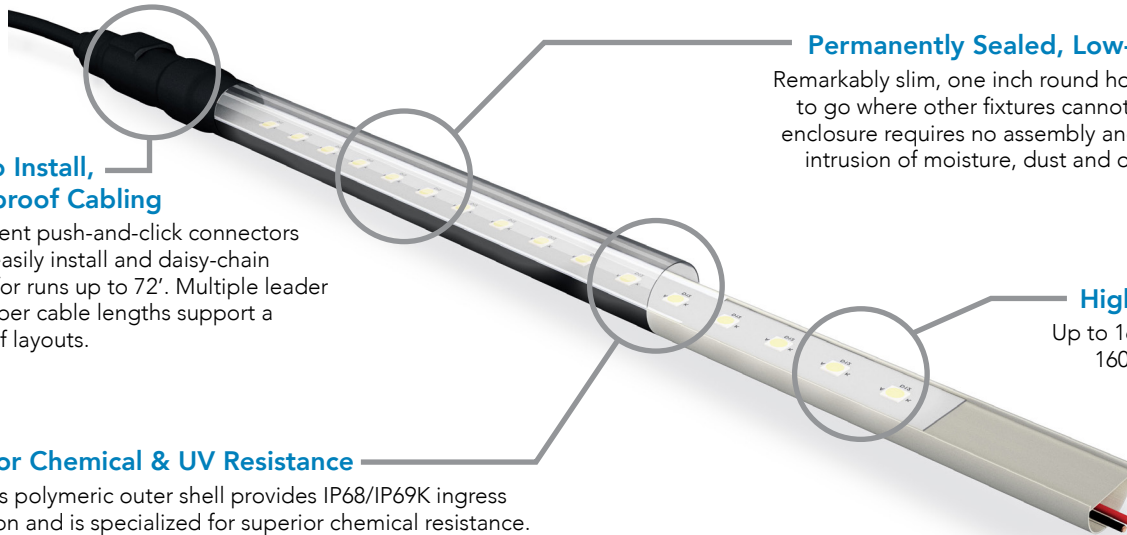
NEMA
6P



BAA
BABAA
COMPLIANT

Harsh Environment LED Luminaire

The WPX is a linkable 1" low-profile luminaire that is designed to withstand prolonged exposure to harsh environments.



Easy to Install, Waterproof Cabling

Convenient push-and-click connectors let you easily install and daisy-chain fixtures for runs up to 72'. Multiple leader and jumper cable lengths support a variety of layouts.

Permanently Sealed, Low-Profile Design

Remarkably slim, one inch round housing allows WPX to go where other fixtures cannot. The single piece enclosure requires no assembly and protects against intrusion of moisture, dust and other combustibles.

High Output LEDs

Up to 16,000 Lumens and 160 lumens per Watt.

Superior Chemical & UV Resistance

Seamless polymeric outer shell provides IP68/IP69K ingress protection and is specialized for superior chemical resistance. An additional protective coating is available which integrates a UV inhibitor and UV blocker for outdoor applications.



WPX PERFORMANCE SUMMARY

- Available Lengths: 2, 4, 6, and 8 foot fixtures
- Available Colors: White, red, green, amber or blue
- Dimensions: Length Varies, Width 1.25" x Height 1.75"
- Delivered Light Output: Up to 16,000 Lumens
- Maximum Run Length: Up to 72', not including jumper cables
- Efficacy: Up to 160 LPW
- Dimming: Optional, 0-10V
- Lifetime: 100,000 Hours at 25°C
- Warranty: 5 Years
- Temperature Rating: Operable in temperatures -40°C to 60°C



Food Processing IP69K Luminaire

The FPX is the most rugged, most efficient LED luminaire engineered specifically for task lighting applications in meat and poultry processing facilities.



Lightweight & Easy to Install

FPX is available as a hardwired fixture, or as an integrated 3 or 4 pin Mini-Change receptacle for simple, reliable quick-connect and daisy chaining.

Three Available Colors

FPX comes standard in crisp, bright white. Red or blue is also available for poultry processing.

Low-Profile, Rounded Design

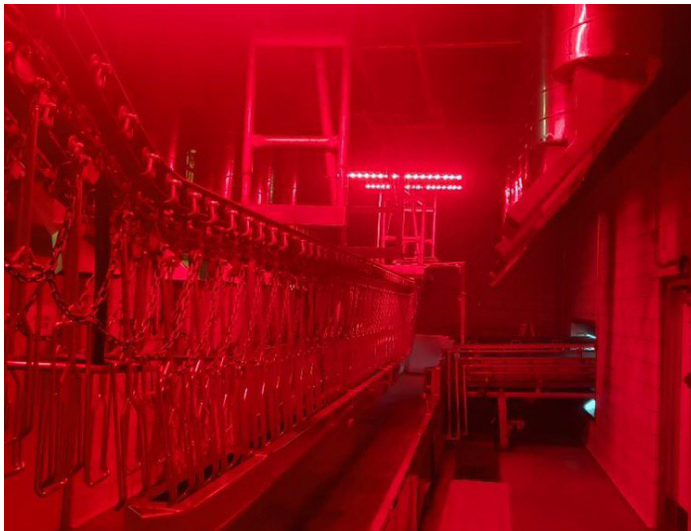
The seamless, glass-free, 2.5" rounded housing allows for water and debris to easily roll off during sanitization and wash down processes. FPX is a National Sanitation Foundation (NSF) certified product.

Superior Waterproof, Chemical & Impact Resistance

Seamless co-polyester housing provides IP68/69K protection and effectively prevents debris intrusion and build up. Specialized for superior chemical and impact resistance to withstand high-temperature, high-pressure wash-down (1500 PSI) during daily sanitization processes.

Compact, High Output LEDs

Engineered to meet the stringent lighting level requirements set forth by the USDA for inspection areas. From a three-foot mounting height, FPX provides 290 footcandles, a 90 CRI option and outputs up to 20,000 lumens.



FPX PERFORMANCE SUMMARY

Available Lengths: 2, 4, and 8 foot fixtures

Available Colors: White, red, or blue

Dimensions: Length Varies, Width 2" x Height 2.5"

Delivered Light Output: Up to 20,000 Lumens

Illuminance: 290 FC at 3'

Efficacy: Up to 160 LPW

Lifetime: 140,000 Hours at 25°C

Warranty: 5 Years

Temperature Rating: Operable in temperatures -40°C to 55°C

Pressure Rating: Withstands up to 1500 PSI at 276°F



**CLASS-1
DIV-2
RATED**

**CLASS-2
DIV-2
RATED**

**IP68
IP69K
CERTIFIED**

**IK10
IMPACT
CERTIFIED**

**NEMA
4X**

**DIRECT AC
DRIVERLESS**



**BAA
BABAA
COMPLIANT**

Driverless Hazardous Location LED Luminaire

The HLX is a direct to AC, linkable, 1" low-profile luminaire that is designed specifically for hazardous locations.



Zero-Maintenance, Driverless Design

Connects directly to AC line voltage without an LED driver or electrolytic capacitors, for extreme reliability and lifetime.

Heavy-Duty, Quick-Connect Cabling

Heavy-duty, MSHA-rated cabling and push-and-click connectors make fixtures easily to install and daisy-chain for long linear runs.

Superior Ingress Protection & Chemical Resistance

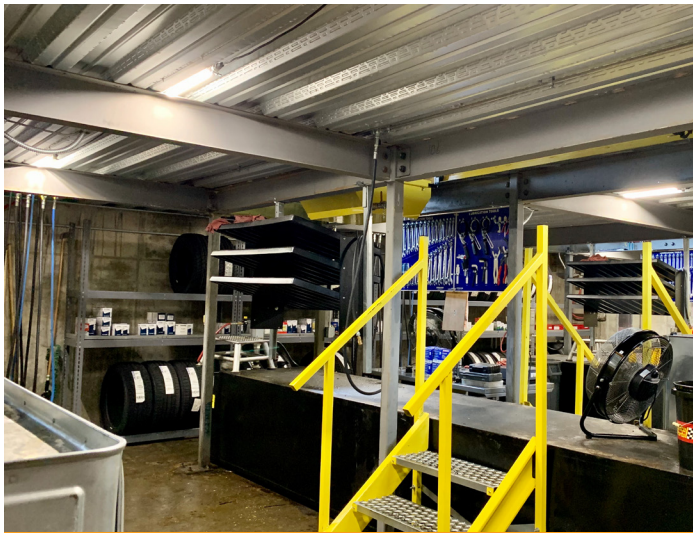
Seamless polymeric outer shell provides IP68/IP69K ingress protection and is specialized for superior chemical resistance. Single piece enclosure requires no assembly and protects against intrusion of moisture, dust, and other combustibles.

Low-Profile, High-Output

Low-profile 1" round design, that packs a punch at 1,000 lumens per foot.

Purpose-Built for Hazardous Locations

Certified for Hazardous Locations Class 1, Division 2 Groups A-D and Class 2, Division 2 Groups E-G, T4 Temperature Rated. HLX fixtures are ideal for areas with little or no ventilation, and compact spaces where other fixtures simply cannot go.



HLX PERFORMANCE SUMMARY

- Available Lengths: 2, 4, and 8 foot fixtures
- Dimensions: Length Varies, Width 1.25" x Height 1.75"
- Delivered Light Output: Up to 8,000 Lumens
- Maximum Run Length: Up to 208' of light
- Efficacy: Up to 125 LPW
- Lifetime: 100,000 Hours at 25°C
- Warranty: 5 Years
- Temperature Rating: Operable in temperatures -40°C to 55°C
- Voltage: 120 or 277 VAC Input
- Surge Protection: Built-in 4KV



**DIRECT AC
DRIVERLESS**

**EMI IP67
SILENT CERTIFIED**

**NEMA
4X**



**BAA
BABAA
COMPLIANT**

Driverless General Purpose LED Luminaire

The GPX is a linkable, 1" low-profile luminaire that can be connected in long runs and installed in areas where space is at a premium.



Zero-Maintenance Driverless Design

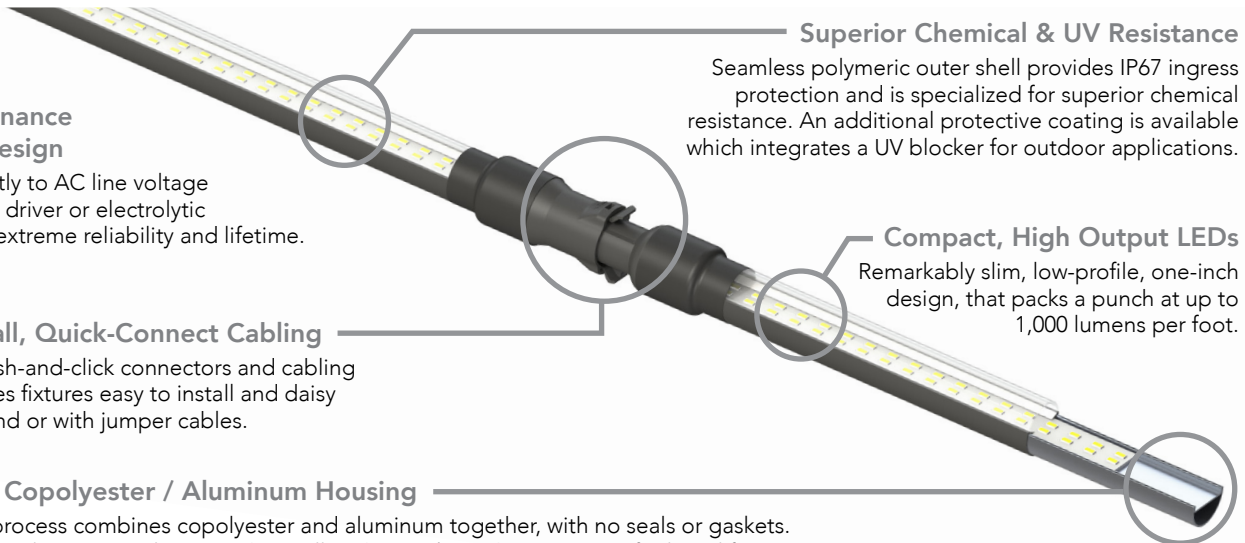
Connects directly to AC line voltage without an LED driver or electrolytic capacitors, for extreme reliability and lifetime.

Easy to Install, Quick-Connect Cabling

Convenient push-and-click connectors and cabling make GPX series fixtures easy to install and daisy chain end-to-end or with jumper cables.

Coextruded Copolyester / Aluminum Housing

Our patented process combines copolyester and aluminum together, with no seals or gaskets. The result is a single piece enclosure with excellent heatsinking characteristics for long lifetime.



Superior Chemical & UV Resistance

Seamless polymeric outer shell provides IP67 ingress protection and is specialized for superior chemical resistance. An additional protective coating is available which integrates a UV blocker for outdoor applications.

Compact, High Output LEDs

Remarkably slim, low-profile, one-inch design, that packs a punch at up to 1,000 lumens per foot.



GPX PERFORMANCE SUMMARY

- Available Lengths: 2, 4, 6, and 8 foot fixtures
- Dimensions: Length Varies, Width 1.25" x Height 1.75"
- Delivered Light Output: Up to 8,000 Lumens
- Maximum Run Length: Up to 950'
- Efficacy: Up to 130 LPW
- Lifetime: 100,000 Hours at 25°C
- Warranty: 5 Years
- Temperature Rating: Operable in temperatures -40°C to 55°C
- Voltage: 120 or 277 VAC Input
- Surge Protection: Built-in 4KV



Industrial Driverless LED Luminaire

The TRX is a direct to AC, linkable, IP68 rated, 1" low-profile, harsh environment rated luminaire engineered for industrial applications.



Zero-Maintenance Driverless Design

Connects directly to AC line voltage without an LED driver or electrolytic capacitors, for extreme reliability and lifetime.

Waterproof, Dust-proof & Corrosion Resistant

Seamless polymeric outer shell provides IP68/IP69K ingress protection and is specialized for superior chemical resistance. An additional UV blocker coating is available for protection in outdoor applications.

Fast & Secure Installation

Fixtures securely mount with stainless steel conduit hangers, and use heavy-duty, push-and-click connectors, making TRX easy to install and daisy-chain for long linear runs.

Low-Profile, High-Output

The 1" round, aimable design outputs up to 8,000 lumens, making TRX fixtures perfect for compact spaces in need of bright light where other fixtures simply cannot go.



TRX PERFORMANCE SUMMARY

- Available Lengths: 2, 4, and 8 foot fixtures
- Dimensions: Length Varies, Width 1.25" x Height 1.75"
- Delivered Light Output: Up to 8,000 Lumens
- Maximum Run Length: Up to 950'
- Efficacy: Up to 125 LPW
- Lifetime: 100,000 Hours at 25°C
- Warranty: 5 Years
- Temperature Rating: Operable in temperatures -40°C to 55°C
- Voltage: 120 or 277 VAC Input (Contact factory for 347V)
- Surge Protection: Built-in 4KV



Vaporsealed LED Luminaire

The VPX is a premium, permanently sealed LED luminaire suited for applications in challenging environments. VPX goes where traditional vaportights let you down.



Zero-Maintenance Driverless Design

Connects directly to AC line voltage without an LED driver or electrolytic capacitors, for extreme reliability and lifetime.

Superior Waterproof, Chemical & UV Resistance

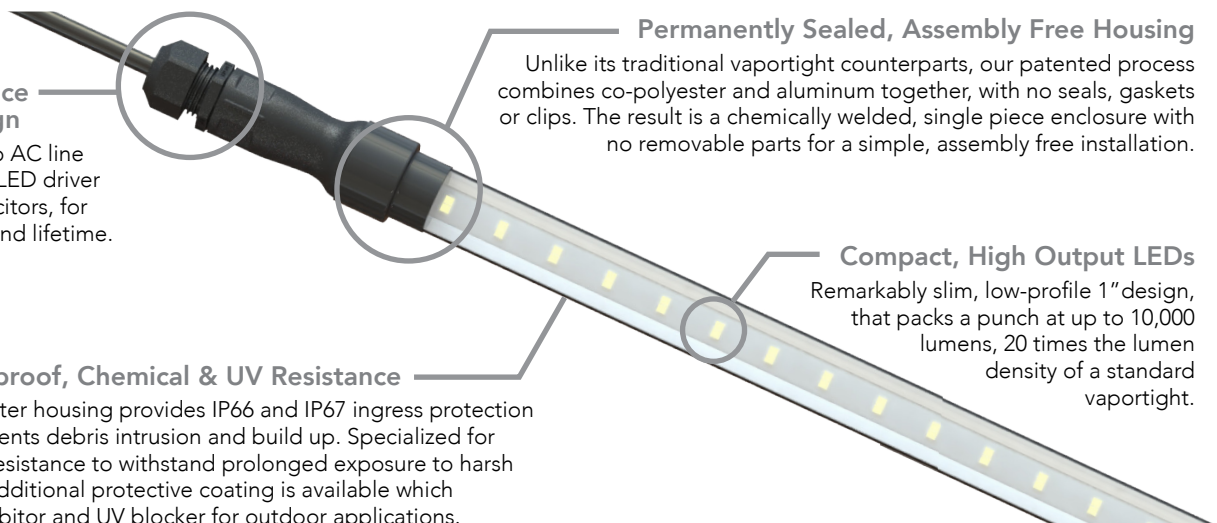
Seamless co-polyester housing provides IP66 and IP67 ingress protection and effectively prevents debris intrusion and build up. Specialized for superior chemical resistance to withstand prolonged exposure to harsh environments. An additional protective coating is available which integrates a UV inhibitor and UV blocker for outdoor applications.

Permanently Sealed, Assembly Free Housing

Unlike its traditional vaportight counterparts, our patented process combines co-polyester and aluminum together, with no seals, gaskets or clips. The result is a chemically welded, single piece enclosure with no removable parts for a simple, assembly free installation.

Compact, High Output LEDs

Remarkably slim, low-profile 1" design, that packs a punch at up to 10,000 lumens, 20 times the lumen density of a standard vaportight.



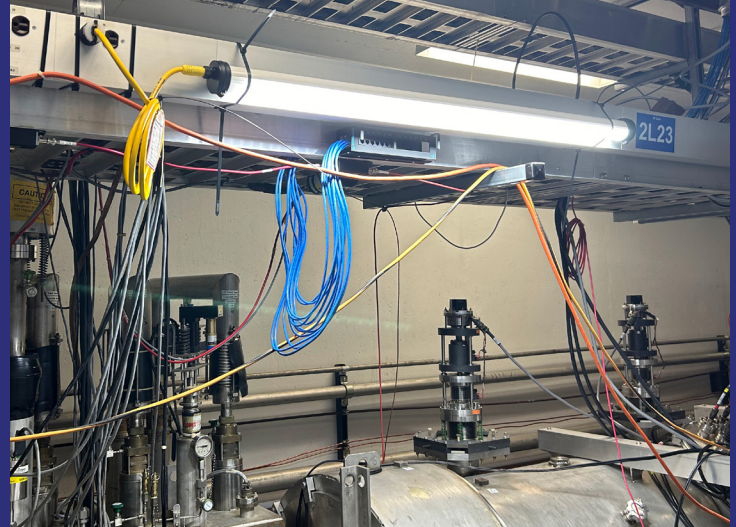
VPX PERFORMANCE SUMMARY

- Available Lengths: 2, 4, and 8 foot fixtures
- Dimensions: Length Varies, Width 1.25" x Height 1.75"
- Delivered Light Output: Up to 10,000 Lumens
- Efficacy: Up to 125 LPW
- Lifetime: 100,000 Hours at 25°C
- Warranty: 5 Years
- Temperature Rating: Operable in temperatures -40°C to 60°C
- Voltage: 120 or 277 VAC Input
- Surge Protection: Built-in 4KV
- All models come with attached 6' SJTOOW power cord.



Radiation Resistant LED Luminaire

The RRX is an extremely compact LED luminaire design to be tolerant of radiation within the harsh environment of an accelerator.

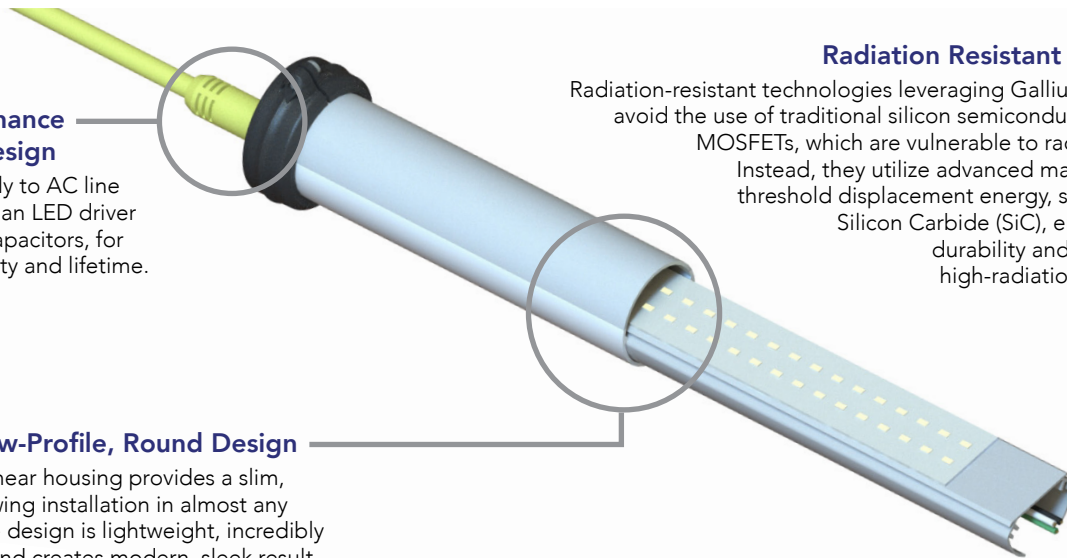


Zero-Maintenance Driverless Design

Connects directly to AC line voltage without an LED driver or electrolytic capacitors, for extreme reliability and lifetime.

Compact, Low-Profile, Round Design

The patented linear housing provides a slim, low-profile allowing installation in almost any application. The design is lightweight, incredibly easy to mount and creates modern, sleek result.

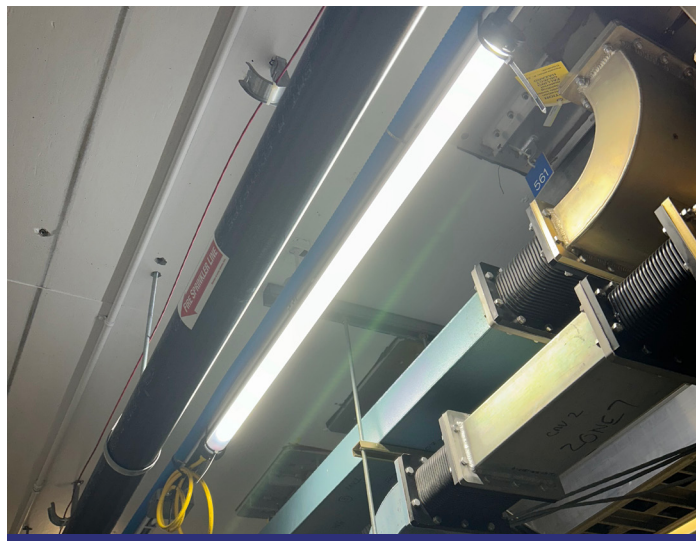


Radiation Resistant Construction

Radiation-resistant technologies leveraging Gallium Nitride (GaN) avoid the use of traditional silicon semiconductor devices like MOSFETs, which are vulnerable to radiation damage. Instead, they utilize advanced materials with high threshold displacement energy, such as GaN and Silicon Carbide (SiC), ensuring superior durability and performance in high-radiation environments.

RRX PERFORMANCE SUMMARY

- Available Lengths: 4 and 8 foot fixtures
- Dimensions: Length Varies, Width 2" x Height 2.25"
- Delivered Light Output: RRX4 = 5,000 lumens
RRX8 = 10,000 lumens
- Efficacy: Up to 120 LPW
- Warranty: 1 Year
- Temperature Rating: Operable in temperatures -40°C to 40°C
- Voltage: 120 or 277 VAC Input
- Total GAMMA Dose: 10 kGy (Components tested to CERN open source standards of 10 kGy. Not suitable for ozone exposure.)





Outdoor Color LED Luminaire

The EDGE is perfect for bringing life to the exterior of any building or infrastructure project. Create dazzling, color-changing shows within a compact, harsh environment rated fixture. Powered by ColorWash™.



Commission-Free Installation & Integration

Lightweight, one-inch housing allows installation in almost any application. Convenient push-and-click connectors and cabling make *EDGE* fixtures easy to daisy-chain and do not require third-party commissioning.

Simple to Control

Choose between two convenient control methods: having the power of G&G's ColorWash™ built right in, or utilize your own DMX controller.

Innovative Electronics Packaging

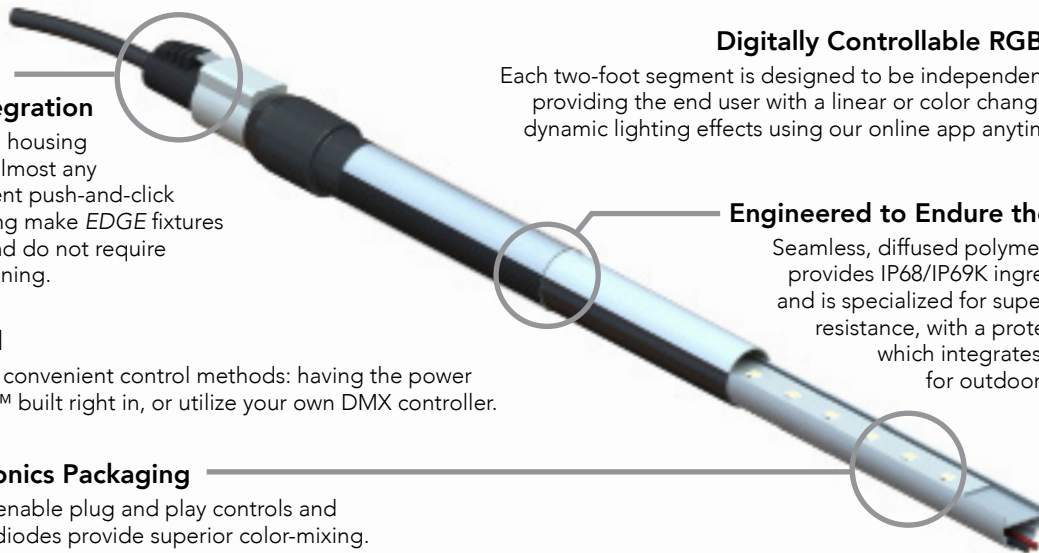
Onboard electronics enable plug and play controls and single-package RGB diodes provide superior color-mixing.

Digitally Controllable RGB Segments

Each two-foot segment is designed to be independently controlled providing the end user with a linear or color changing show with dynamic lighting effects using our online app anytime, anywhere.

Engineered to Endure the Elements

Seamless, diffused polymeric outer shell provides IP68/IP69K ingress protection and is specialized for superior corrosion resistance, with a protective coating which integrates a UV blocker for outdoor applications.



EDGE PERFORMANCE SUMMARY

- Available Lengths: 2, 4, 6, and 8 foot fixtures
- Dimensions: Length Varies, Width 1.25" x Height 1.75"
- Maximum System Length: Up to 768'
- DMX Channels: 4 per 2' length
- Dimming: 1% - 100%
- Optics: 120°
- Lifetime: 100,000 Hours at 25°C
- Warranty: 5 Years
- Temperature Rating: Operable in temperatures -40°C to 55°C
- Controller: G&G's ColorWash™ or any DMX control system

Certification Glossary



cULus and ETL certifications indicate that products meet safety standards in North America. cULus is issued by UL for products sold in Canada and the U.S., while ETL, from Intertek, signals compliance with similar standards. Both ensure a product's safe use and regulatory conformity in the market.

IP66 **IP68**
IP67 **IP69K**

IP ratings (Ingress Protection) denote a product's resistance to dust and water. IP66 offers protection against dust and strong water jets, IP67 against immersion up to 1 meter, IP68 against prolonged immersion, and IP69K against high-pressure, high-temperature water. Higher numbers indicate increased protection from environmental factors.



NSF certification verifies that a product meets public health and safety standards, primarily for food, water, and consumer goods. Issued by the NSF International organization, it ensures compliance with hygiene, quality, and safety regulations, helping consumers and businesses trust the integrity and safety of certified products.

IK07 **IK10**
IMPACT **IMPACT**
CERTIFIED **CERTIFIED**

IK ratings measure a product's resistance to mechanical impact. IK07 indicates protection against a 2 joule impact (e.g., a 0.5 kg object dropped from 40 cm), while IK10 provides protection against a 20 joule impact (e.g., a 5 kg object dropped from 40 cm), ensuring durability in harsh environments.

NEMA **NEMA**
4X **6P**

NEMA 4X and NEMA 6P ratings define a product's resistance to environmental conditions. NEMA 4X offers protection against dust, water, and corrosion, while NEMA 6P ensures waterproofing against prolonged submersion. Both ratings indicate rugged enclosures suitable for harsh, wet, or corrosive environments, ensuring equipment durability and safety.



Double Insulated

The NEC 2020 edition allows lighting products with double insulation, which lack exposed metal parts, to be exempt from grounding requirements. These products, marked with a specific symbol, are considered safer as they don't require grounding to prevent shock hazards, differing from products with exposed metal components.

CLASS-1 **CLASS-2**
DIV-2 **DIV-2**
RATED **RATED**

Class-1, Div-2 and Class-2, Div-2 are hazardous location ratings for electrical equipment. C1D2 indicates protection against explosive gases or vapors in Class 1 (flammable) environments, while C2D2 applies to Class 2 (dust) environments. Both ratings ensure equipment is safe for use in areas with potentially explosive or combustible materials.

EMI
SILENT

An EMI-silent LED fixture generates minimal electromagnetic interference (EMI), ensuring it doesn't disrupt nearby electronic devices or communication systems. This is crucial for environments sensitive to interference, such as hospitals or laboratories, where high-frequency noise could impact equipment performance or signal integrity.



Radiation

A radiation-resistant LED fixture is designed to withstand exposure to ionizing radiation without performance degradation. This makes it suitable for use in environments like particle accelerators, medical facilities, or space applications, where radiation levels could damage standard lighting, ensuring reliability and longevity in such harsh conditions.

GaN
SiC

GaN (Gallium Nitride) and SiC (Silicon Carbide) are semiconductor materials known for high efficiency and performance in power electronics. GaN excels in high-frequency and high-voltage applications, while SiC is favored for high-temperature and high-power systems, making both crucial for energy-efficient devices, electric vehicles, and industrial applications.

3G
VIBRATION

A 3G vibration rating indicates a product's ability to withstand vibration forces up to 3 times the force of gravity (3g). This rating ensures the device can endure mechanical stress and vibrations typically encountered in industrial, automotive, or transportation environments without compromising performance or structural integrity.

Mounting Accessory Part Numbers

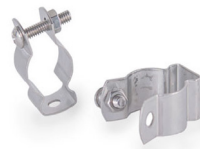
WPX, WPX COLOR, HLX, TRX, VPX, GPX, & EDGE

G&G will provide the appropriate type (indoor vs. outdoor) and quantity of non-metallic quick latch clip depending on each fixture ordered (two clips per 2' and 4' fixtures, or three clips per 6' and 8' fixtures).

Part Number	Description
MNT-G1-NM-2015	(1) Non-Metallic Quick Latch Mounting Clip (Indoor)
MNT-G1-NM-2020	(1) Non-Metallic Quick Latch Mounting Clip (UVO Outdoor)
MNT-G1-SS	(1) Stainless Steel Bolt Latch Mounting Clip
MNT-G1-SS-KIT	Kit of (3) Stainless Steel Bolt Latch Mounting Clips
MNT-G1-MAG-NM-2015	(1) Non-Metallic Quick Latch Mounting Clip (Indoor) with Maximum Strength Disc Magnet
MNT-G1-MAG-NM-2020	(1) Non-Metallic Quick Latch Mounting Clip (UVO Outdoor) with Maximum Strength Disc Magnet
MNT-G1-MAG-SS	(1) Stainless Steel Bolt Latch Mounting Clip with Maximum Strength Disc Magnet



Non-Metallic Quick Latch Mounting Clips

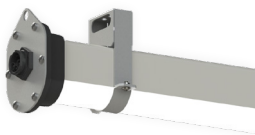


Stainless Steel Bolt Latch Mounting Clips

FPX AND FPX COLOR

All fixture models have a cable/chain mount option incorporated into the end-cap (the actual cable/chain is not included).

Part Number	Description
MNT-G2-SM	Kit of (2) Surface Mount Stainless Steel Bands
MNT-G2-WM-45	Kit of (2) 45° Wall Mount Stainless Steel Bands



Surface Mount



Wall Mount at 45° Angle

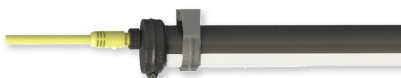


Cable/Chain Mount

RRX

RRX only uses MNT-G3-SURF-SS, and they come included based on length.

Part Number	Description
MNT-G3-SURF-SS	(1) Stainless Steel Bolt Latch Mounting Clip



Surface Mount



Unique Lighting Solutions for Harsh Environments

At G&G Industrial Lighting, we don't just build lights—we *engineer solutions*. Our LED lighting solutions are purpose-built to meet the unique challenges of each application. Our products are built with the durability withstand the harshest environments and deliver dependable, long-term performance. We listen to our customers, and put them first in everything we do. If you need lighting built to withstand it all, you need G&G Industrial Lighting. We're here to help you light the way, no matter what the environment throws at you.

G&G
INDUSTRIAL LIGHTING

10 Hermes Road, Malta, NY 12020

800.285.6780 sales@ggled.net

ggled.net